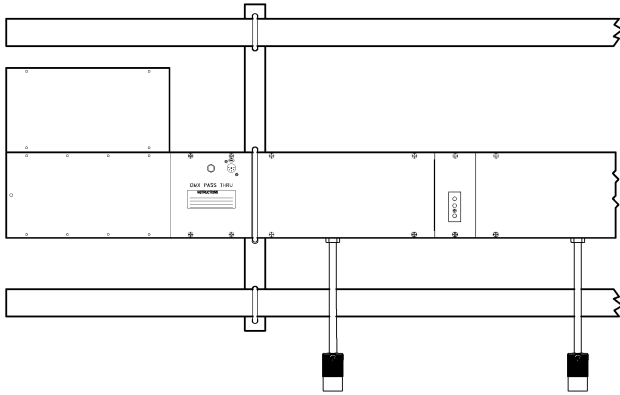


# POWER DISTRIBUTION

Catalog Number

**450\*CUS**



Fixture Type:

Altman Lighting's 450 Series Connector Strips feature rugged steel construction, innovative data distribution, and a wide array of available connector types and hanging hardware. Each Connector Strip is custom built for the specifications of the project.

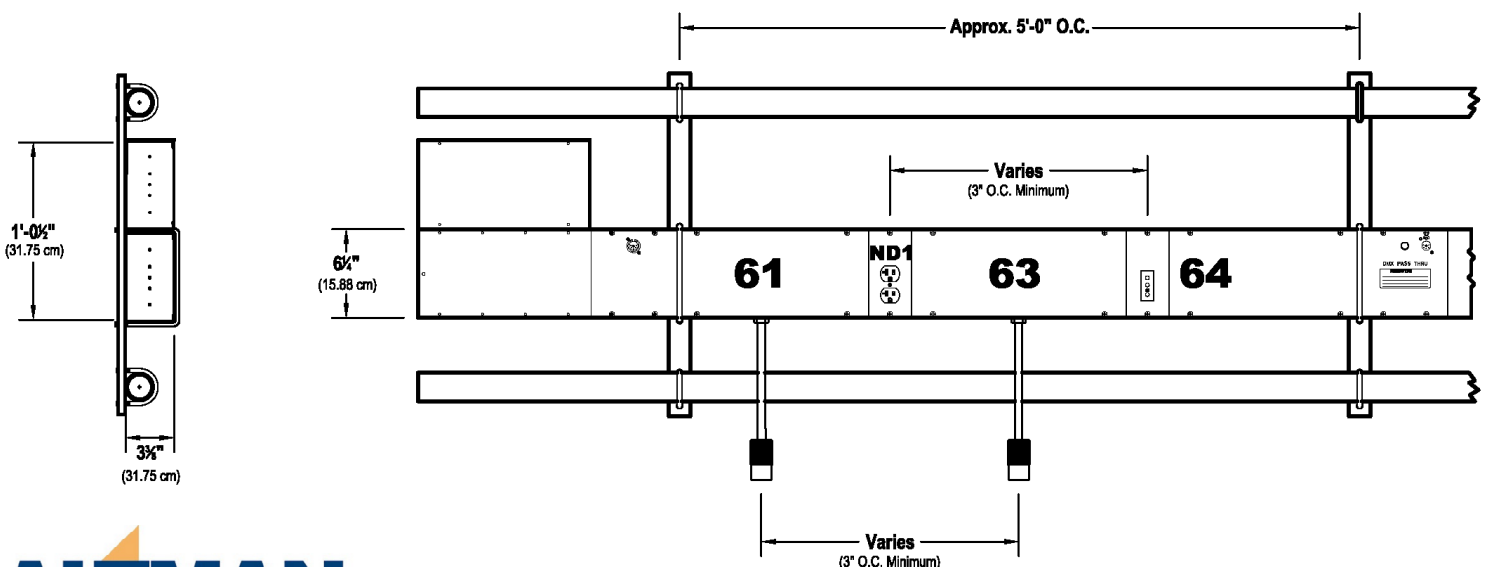
Pigtail and flush mount load connectors are prewired to spring loaded terminals at the feed end of the strip. Connector Strips are available with Active and Passive

DMX-512/RDM & Ethernet Data management and can be mounted horizontally or vertically, dead hung or attached to movable rigging sets. The 450 is suitable for installation in theatres, television studios, or anywhere a system of permanent circuit distribution and data distribution for conventional, LED, and automated luminaires is desired.

## STEEL CONNECTOR STRIP with Optional Data Distribution

### Features:

- Rugged 18 gauge steel construction with 14 gauge end caps and joiners. Center holes on end caps provided for conduit fittings
- A variety of flush mount and pigtail connectors are available for 20amp, 30amp, 50amp, and 50amp circuits. Individual circuits can be wired to multiple pigtails or receptacles.
- Active or passive data management for distribution of DMX-512A/ RDM to distributed dimmers, automated fixtures, and LED Luminaires.
- Optional per circuit indicator lamps available.
- Easy to ship, assemble, and service.
- DIN Rail mounted screwless spring terminals for termination of 20amp loads (up to #8 AWG). Screw terminals for 30amp, 50amp, and 100amp wiring.
- DIN Rail mounted control box for integration of DMX-512A/ RDM Opto Splitters, Ethernet nodes, and other DIN rail mounted control devices.
- Standard 2" high white vinyl numbers for circuit identification on one side. Numbering on both sides, custom vinyl colors, and lamicoid circuit identification plates are available.
- 1-Tool Assembly (#2 Phillips Screwdriver)
- ETL & cETL
- Made in the USA



**ALTMAN**  
Lighting, Inc.

57 Alexander Street, Yonkers, NY 10701 Tel: 914.476.7987, 212.569.7777 Fax: 914.963.7304  
BRINGING IMAGINATION TO LIGHT Visit our website at [www.altmanltg.com](http://www.altmanltg.com) © 2016 Altman Stage Lighting Company, Inc.

## Steel Connector Strip w/Data Specifications:

### General:

- Available in standard and custom lengths. Connector Strips over 6' come folded in sections, packaged for quick assembly.
- Active and Passive Data Management available for DMX-512A/RDM and Ethernet control signals.
- Flat Black Finish. Custom colors are available
- Standard 2" high white vinyl numbers for circuit identification on one side. Numbering on both sides, custom vinyl colors, and lamicoïd circuit identification plates are available.
- ETL, cETL

### Physical:

- 18 gauge steel construction with 14 gauge end caps and joiner pieces.
- 14 Ga Electro Zinc Steel end caps and joiners
- 20 GA Electro Zinc DMX Barrier
- .125" Center holes on end caps for conduit fittings
- DMX & Flush Receptacle panels are on 3" Centers. Pigtails are on 1.5" Centers,
- All DIN Rail mounted components.

### Data Management Options:

- No DMX: No data distribution and management is built into the connector strip.
- Passive DMX (non-Opto Isolated): Up to (4) individual DMX-512/RDM Data Lines can be run through the strip to Flush mounted XLR Connectors. "Pass-thru" panels are provided for multiple receptacles on a single data line.
- Active DMX: DMX-512A/RDM Data is distributed throughout the strip from a single source via Pathway eDIN Opto-Isolators mounted in the control box.
- Ethernet distribution solutions (integrated switches, Ethernet to DMX nodes, etc.) are available.
- Hardwired and optional XLR Receptacle data inputs available at control box.

### Power Input:

- Circuits in the Connector Strip are prewired to a junction box, which contains DIN-rail mounted terminal strips for easy installation.
- DIN Rail mounted screwless spring terminals for termination of 20amp loads (up to #8 AWG). Screw Terminals for 30amp, 50amp, and 100amp wiring.
- Second Terminal Box added for configurations with more than (24) 20amp circuits.
- 19-Pin Socapex/ VEAM power feed connections are available.

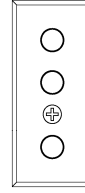
### Connector Options:

- Pigtail or Flush Mount 20amp Stage Pin connectors
- Pigtail or Flush Mount "Edison" (NEMA 5-15 and 5-20 connectors)
- Pigtail or Flush Mount Twistlock (NEMA L5-15 and L5-20 connectors)
- Other connectors including L620, 19-Pin Socapex/ VEAM, 30amp, 50amp, and 100 amp connectors are available.

## Power Receptacles:

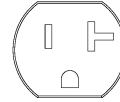
### Stage Pin (GSP)

20, 50, OR 100amp Stage Pin Receptacle (20 amp shown)



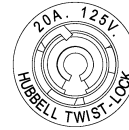
### Parallel Blade (PBG)

Parallel Blade or "Edison" receptacle (NEMA 5-20) will mate with NEMA 5-15 and NEMA 5-20 Plugs.



### Twistlock (GTL)

20amp Twistlock Receptacle, NEMA L-520



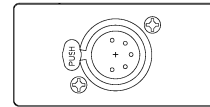
*All Connectors shown here are available in either Flush mount or Pigtail configurations. Standard pigtail lengths are 18". Custom Pigtail lengths are available.*

*Other connector types and configurations are available. Contact Altman lighting for additional information.*

## Data Receptacles:

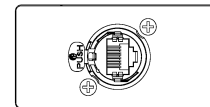
### Female 5-Pin XLR (DMX)

Flush mounted female 5-Pin XLR for distribution of isolated and non-isolated DMX-512A/RDM Signals.



### Ethercon RJ-45 (Ethernet)

Flush mounted RJ-45 connector in XLR shell for distribution of Ethernet Control signals.



### DMX Pass Thru

Male and Female 5-Pin XLR Receptacles with push button switch to connect (pass thru) and disconnect them.

