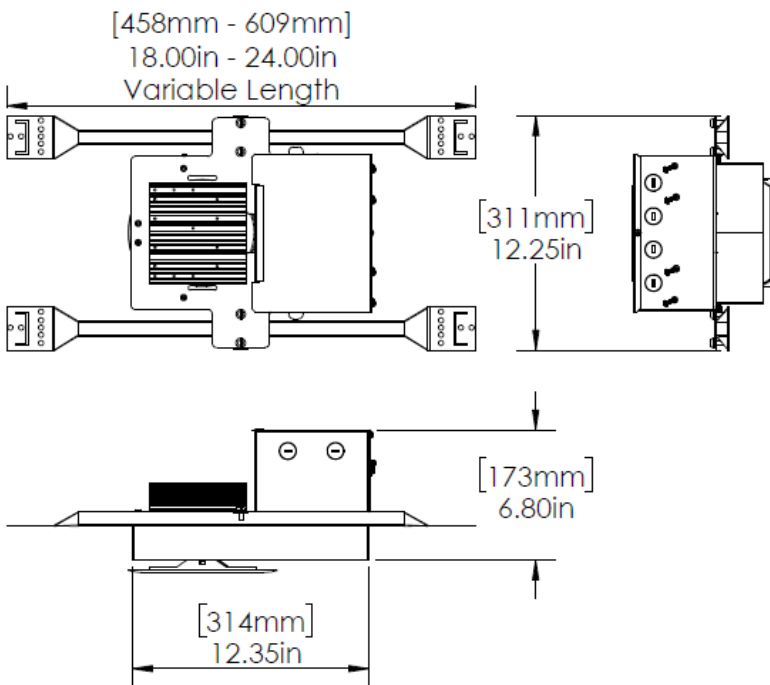
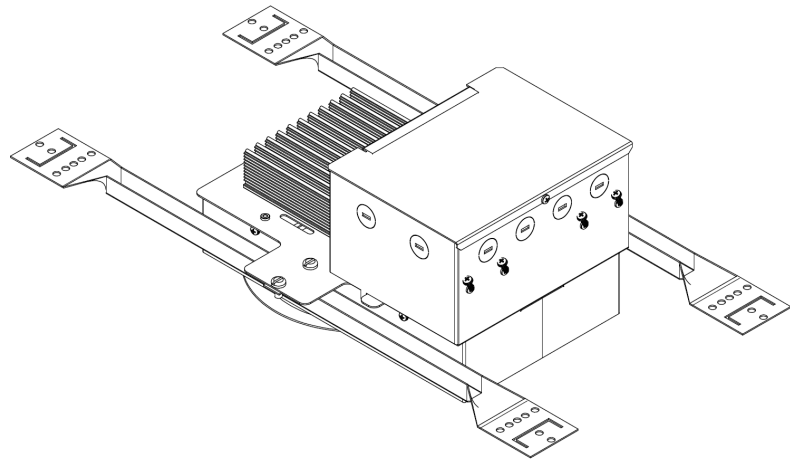


## SUMMARY

The 50W Recessed Chalice from Altman Lighting is a LED architectural down light designed for permanent installation and energy savings. Changing lamps in your fixtures has now become a thing of the past.

Integrating the fixture into an existing control system is easy with the simple three-button DMX addressing that is easily accessible from the bottom of the luminator: set it once and enjoy a smoothly integrated and energy efficient illumination solution for your area of choice.

The 50W Recessed Chalice is able to be controlled by your DMX control console & architectural control system; also available as a mains dimmable fixture for those facilities being built without a DMX control system, or for easy retrofit to a current installation for energy savings.



## FEATURES

- 4 interchangeable lenses
- DMX or Mains Dimmable
- Push Button DMX Addressing and RDM compatibility
- DMX Pass through
- Flicker Free mode with 8-bit or 16-bit selectable operation
- Power: 50W LED driver
- ETL, cETL Listed for Indoor Use
- Proudly made in the USA

## SPECIFICATIONS

**Materials:** Corrosion-resistant materials and hardware.

**Housing:** Corrosion resistant aluminum outer shell with aluminum interior components.

**Control:** Mains Dimmable and DMX (Fully RDM Compliant w/ 1 DMX in and 1 DMX out)

**Light Engine DMX 50W** - Available in 3000K, 3000K-6000K Tunable White, 4000K, and 6000K. Also available in RGBA and RGBW. Rated for >50,000 hours of operation.

**Light Engine Mains Dimmable 50W** - Available in 3000K, 4000K and 6000K. Rated for >50,000 hours of operation.

**Input Voltage:** 100-240 VAC 50/60hz  
0.42A @120VAC  
0.21A @ 240VAC

**Cooling:** Natural Convection

**Ambient Temperature:** 0 to 40 degrees C (32 to 104 degrees F)

**Trim Ring Finish:** Black, White, or Silver (Custom colors available)

**Weight:** 12 Pounds (5.44Kg.)

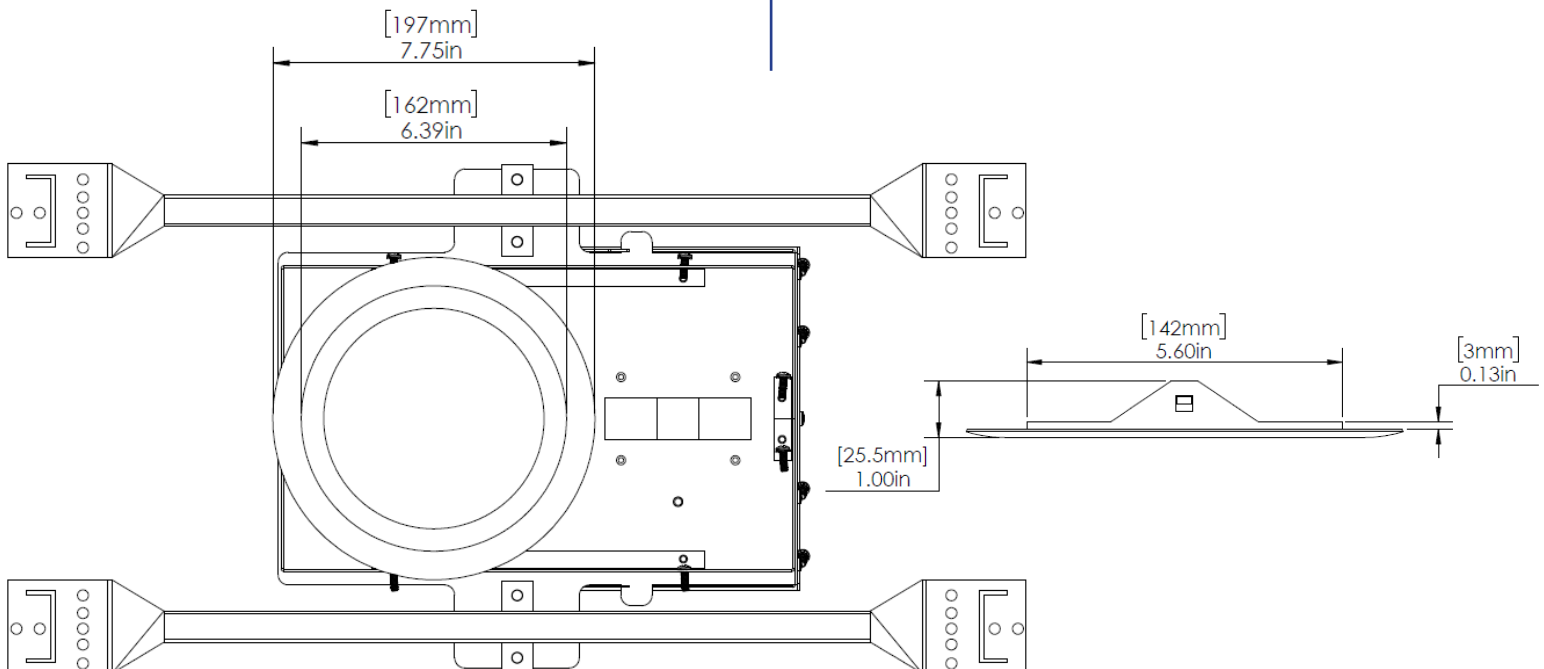
**Rating:** ETL, cETL

Model	Description
CDR50-*.**_***	Chalice 50W Recessed LED Downlight
* (CCT)	Add the following code for Emitter CCT: 2K, 3K, 4K, & 5K, RGBA, RGBW (Nb.2K=2700 Kelvin)
** (Body Color)	Add the following code for Body Color: B=Black, W=White, S=Silver, C=Custom
*** (Intensity Control)	Add the following code for Intensity Control: D=DMX, M=Mains dimmable

**Note:** Mains Dimmable fixtures are only available in a single color or color temperature

## ACCESSORIES

Accessories P/N	Description
CDP50-30SL	30° Spread Holographic Lens
CDP50-40SL	40° Spread Holographic Lens
CDP50-60SL	60° Spread Holographic Lens
CDP50-P95	P95 Diffusion Lens (~22°)
SS-8CDL-DMX-TERM	DMX 120-Ohm Terminator Kit



**Ceiling Cut Opening:** 6in min. 7.5in max.