

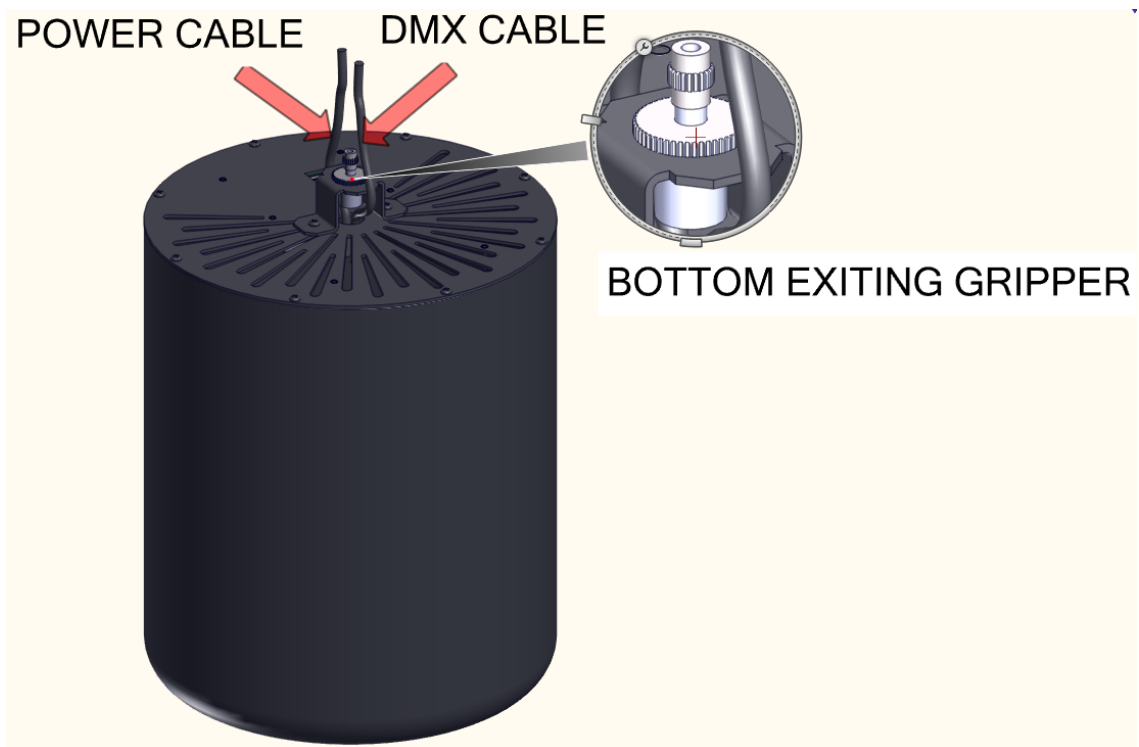
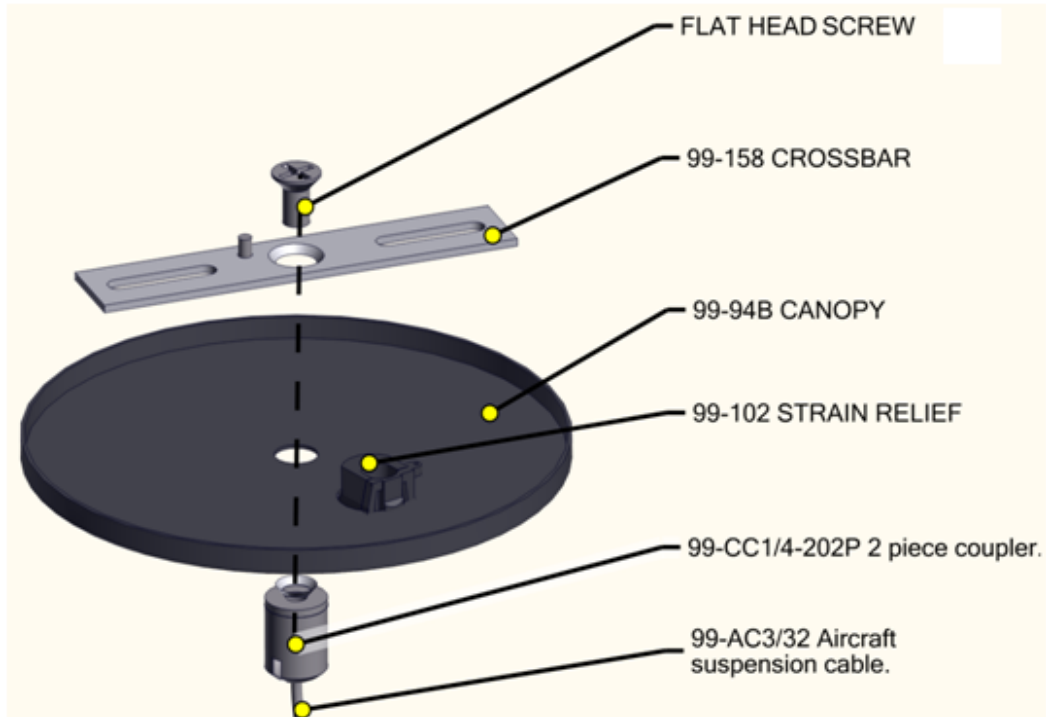


Air Craft Cable Installation Manual for Chalice



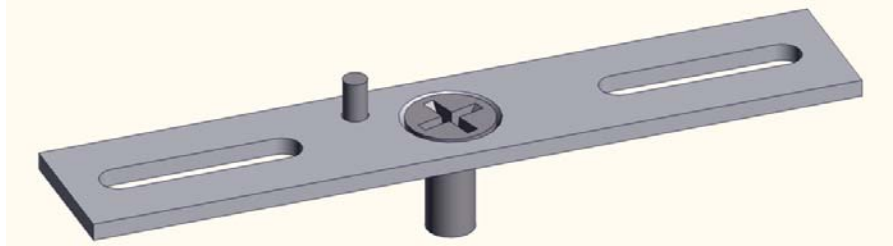
Included Items

Chalice unit installed with bottom exiting Gripper

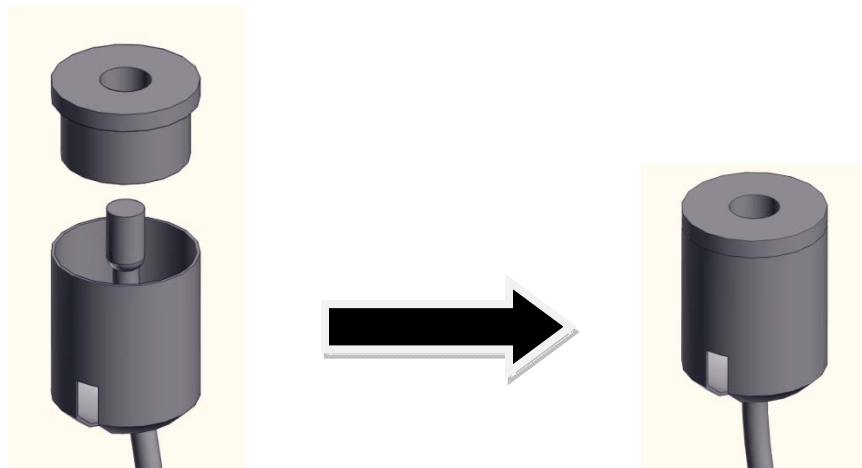


Air Craft Suspension Cable Instruction Manual

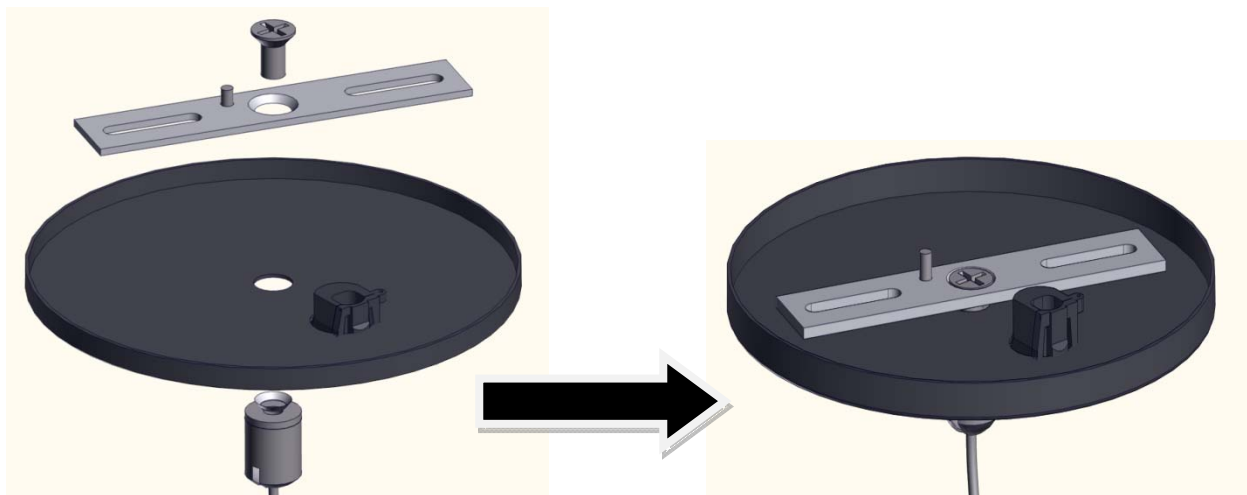
Step 1: fasten 8-32 flat head screw with crossbar



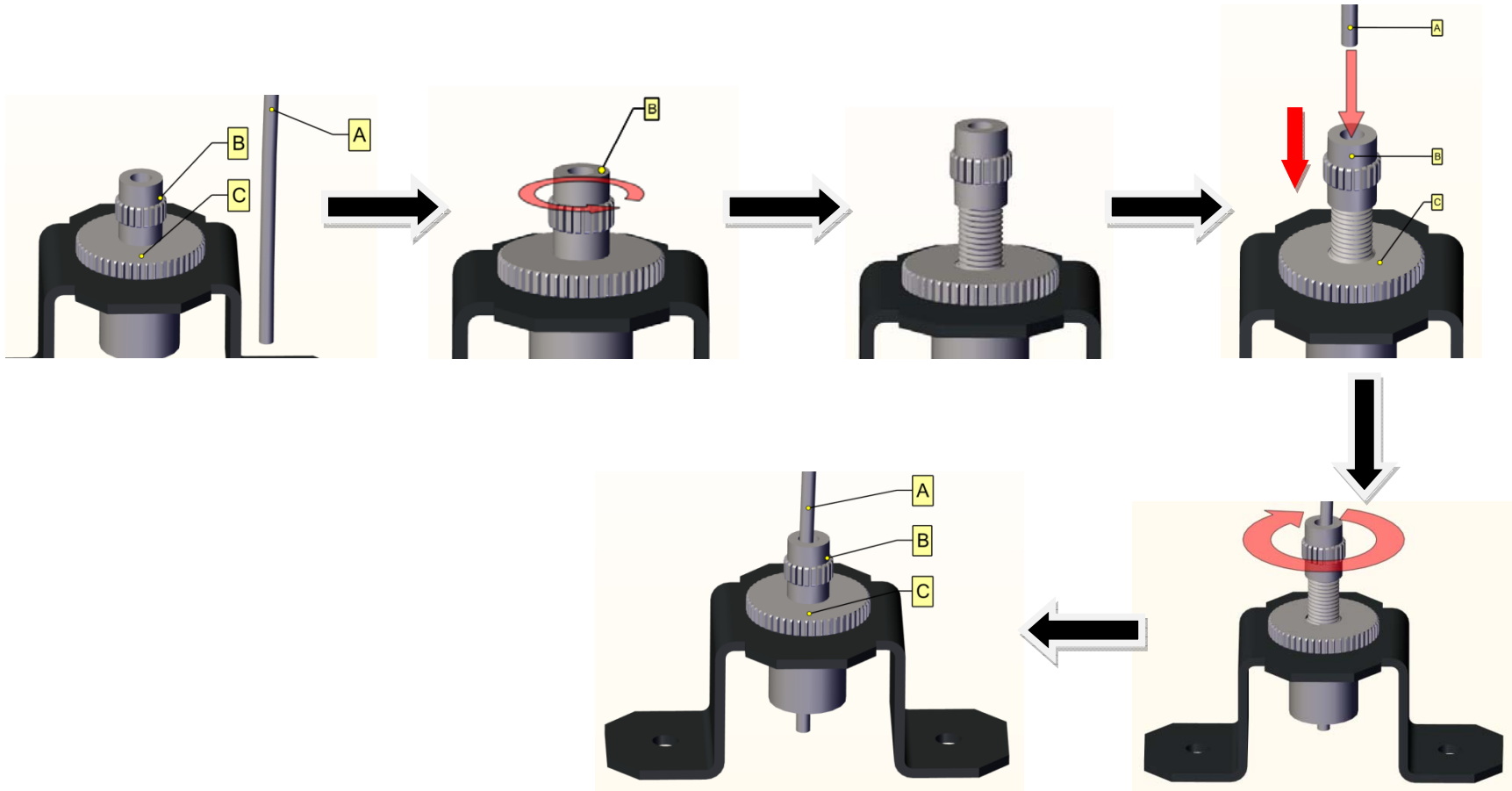
Step 2: Pull Aircraft suspension cable through the slot of 2 piece coupler until its end and fasten top coupler cover.



Step 3: Fasten Crossbar (step 1) with canopy and 2 piece slotted coupler



Step 4: Installing cable (A) in Gripper (C)



Air Craft Suspension Cable Installation Manual

