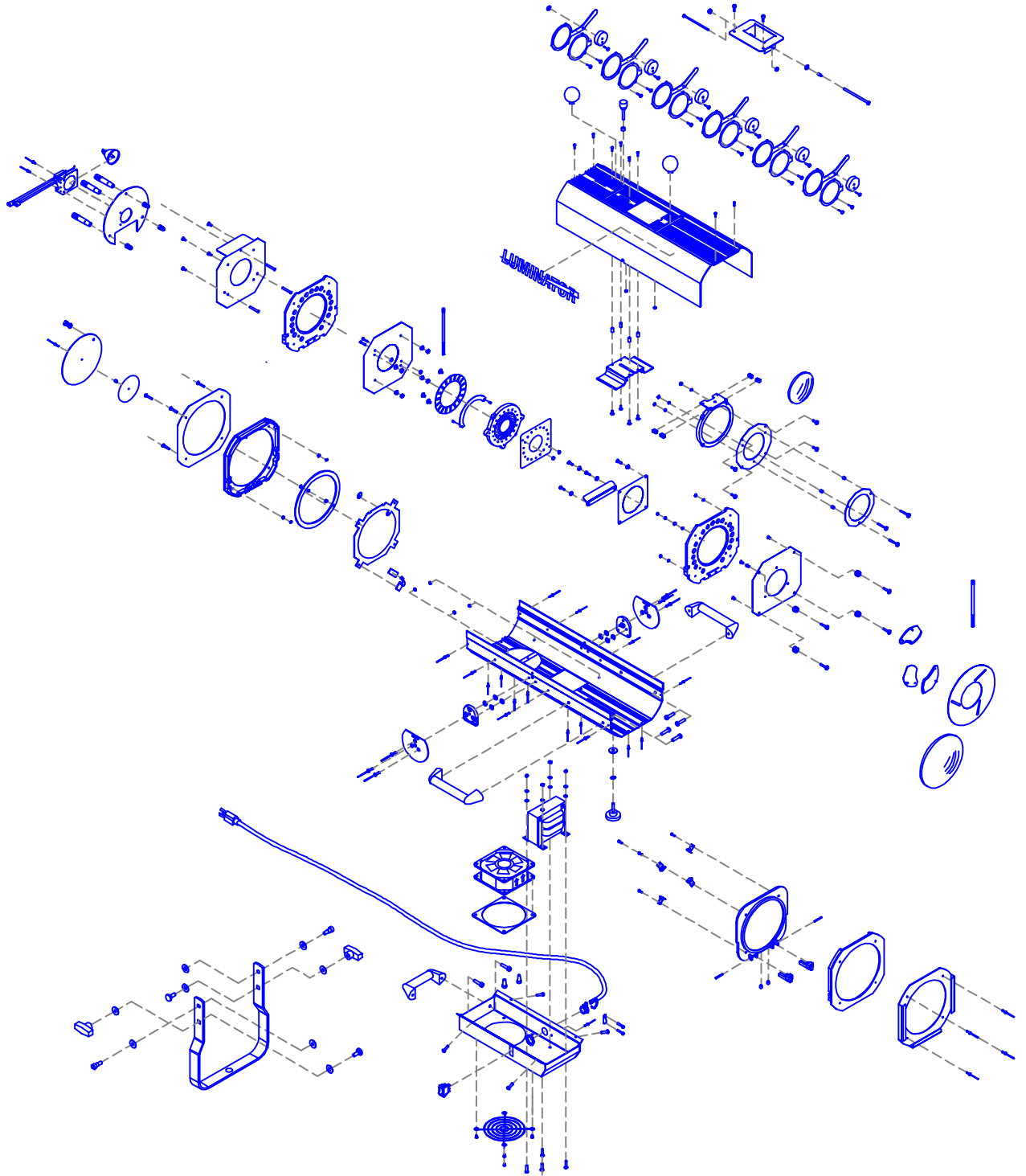


# LUMINATOR

Catalog No:	Assy No:	Description:	Revision:	Section:
LUMINATOR		LUMINATOR FOLLOWSPOT	D	6.1.1

Color Code: ● = Object ● = MFG. Number-Not for Sale ● = Obsolete ● = Part Number/Note **Bold** = Sub-Assembly



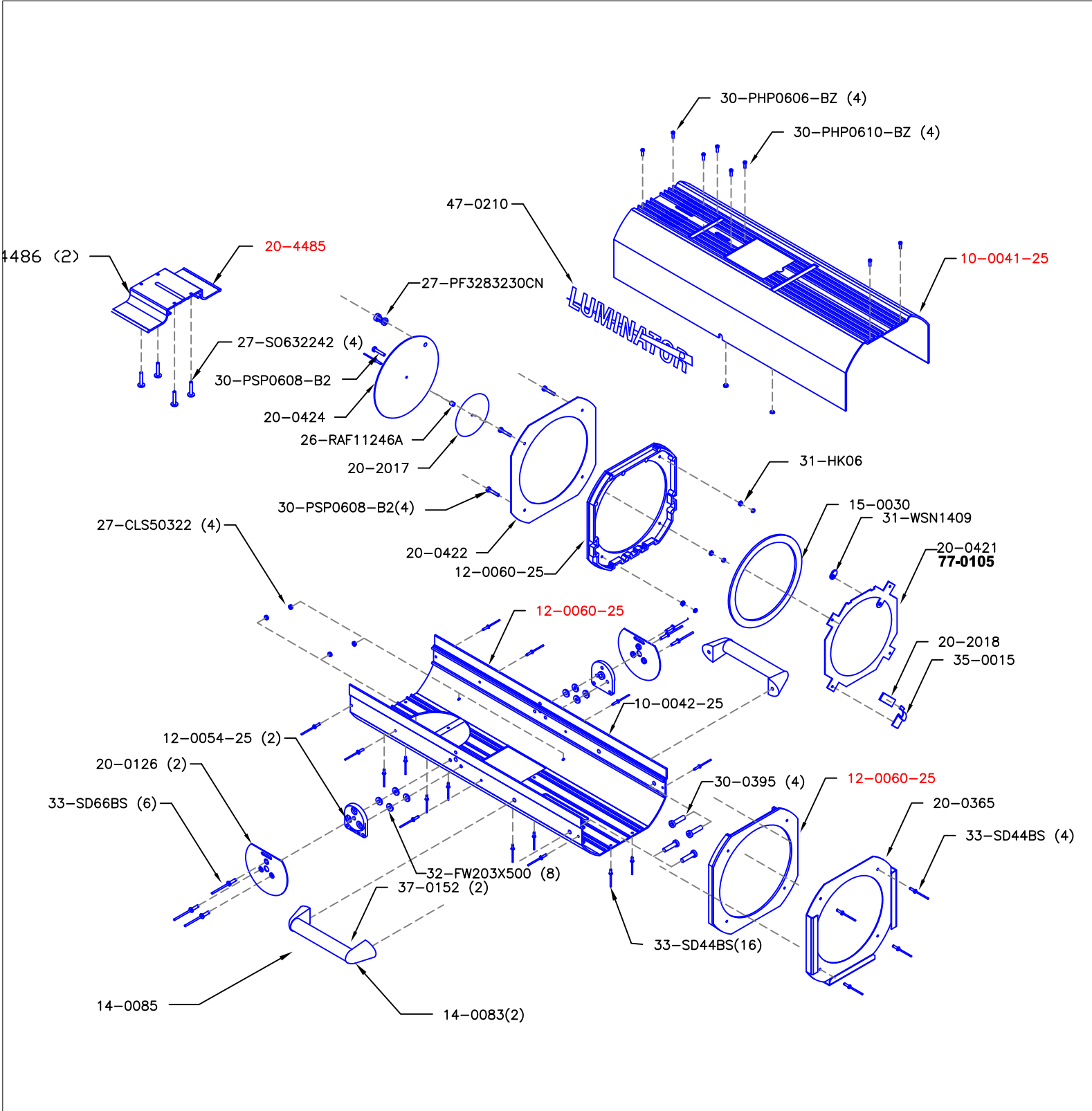
# ALTMAN

Altman Lighting Co. Inc.  
57 Alexander St., Yonkers, NY, 10701  
Ph: (914) 476-7987 Fax: (914) 963-7304  
<http://www.altmanltg.com>

# LUMINATOR BODY

Catalog No:	Assy No:	Description:	Revision:	Section:
		LUMINATOR BODY	E	6.1.2

Color Code: ● = Object ● = MFG. Number-Not for Sale ● = Obsolete ● = Part Number/Note **●** = Sub-Assembly



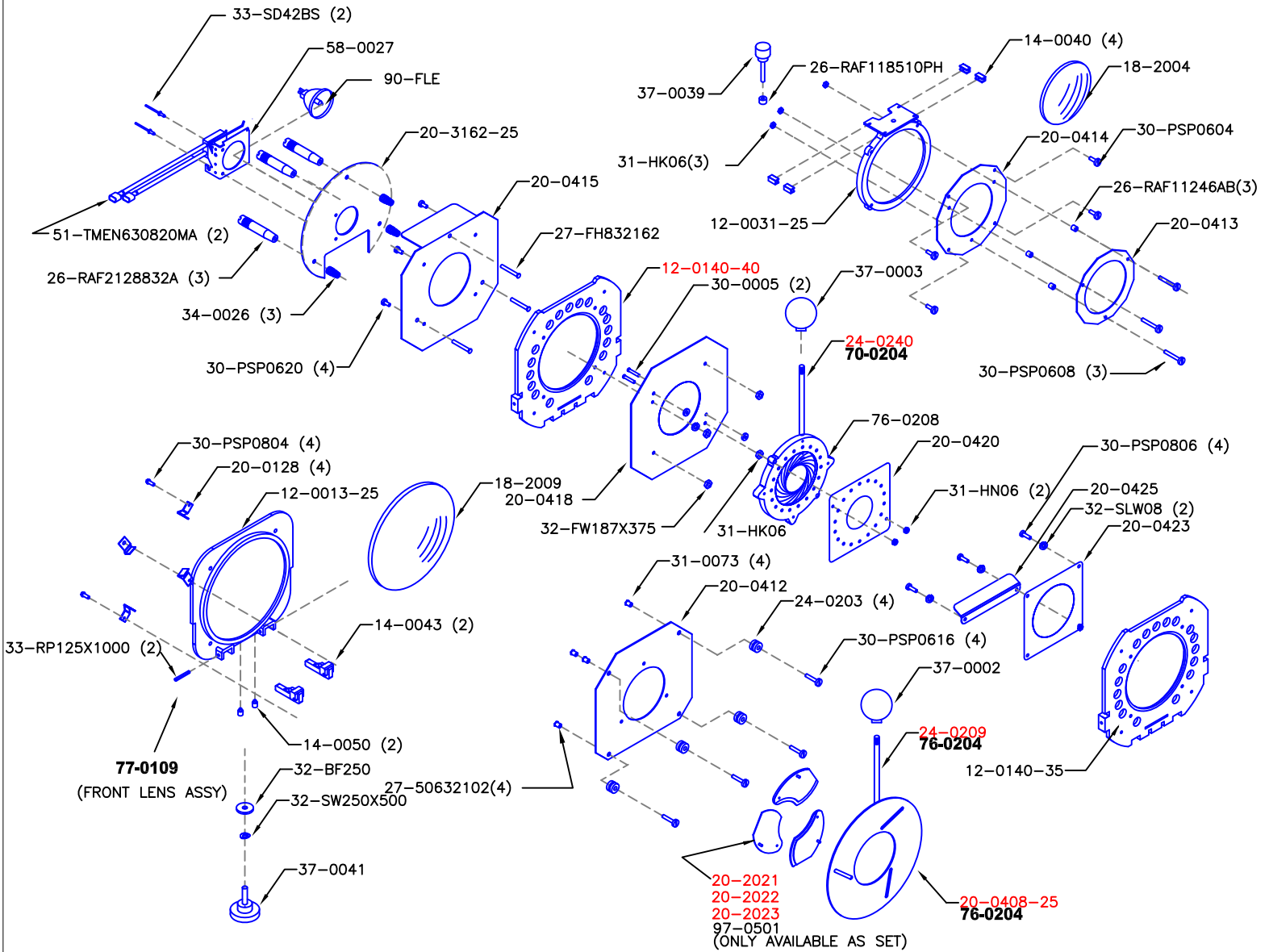
# ALTMAN

Altman Lighting Co. Inc.  
 57 Alexander St., Yonkers, NY, 10701  
 Ph: (914) 476-7987 Fax: (914) 963-7304  
<http://www.altmanltg.com>

# LUMINATOR OPTICS

Catalog No:	Assy No:	Description:	Revision:	Section:
		LUMINATOR OPTICS	G	6.1.3

Color Code: ● = Object ● = MFG. Number-Not for Sale ● = Obsolete ● = Part Number/Note **●** = Sub-Assembly



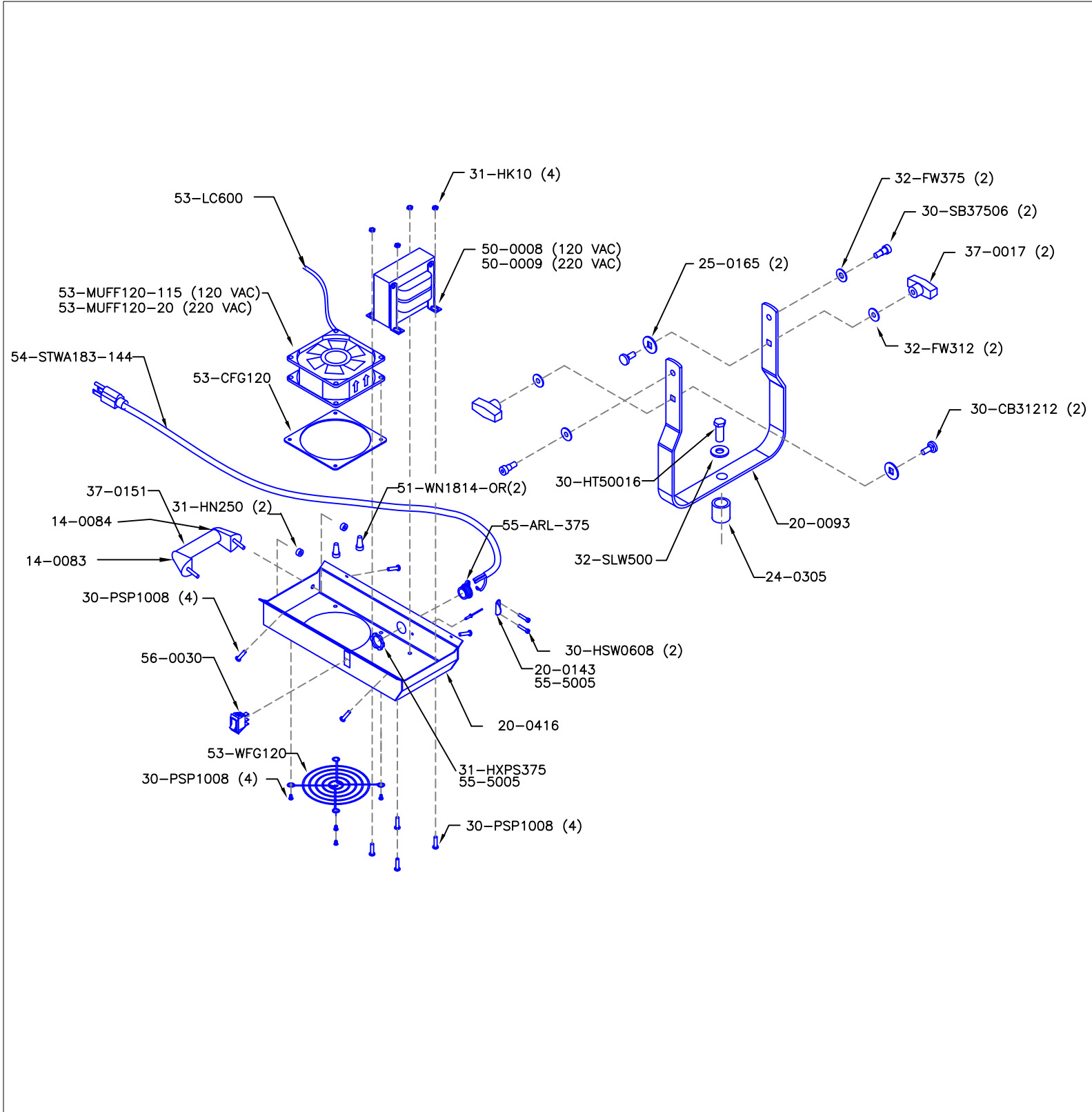
# ALTMAN

Altman Lighting Co. Inc.  
 57 Alexander St., Yonkers, NY, 10701  
 Ph: (914) 476-7987 Fax: (914) 963-7304  
<http://www.altmanltg.com>

# LUMINATOR BOTTOM

Catalog No:	Assy No:	Description:	Revision:	Section:
		LUMINATOR BOTTOM	F	6.1.4

Color Code: ● = Object ● = MFG. Number-Not for Sale ● = Obsolete ● = Part Number/Note **Bold** = Sub-Assembly



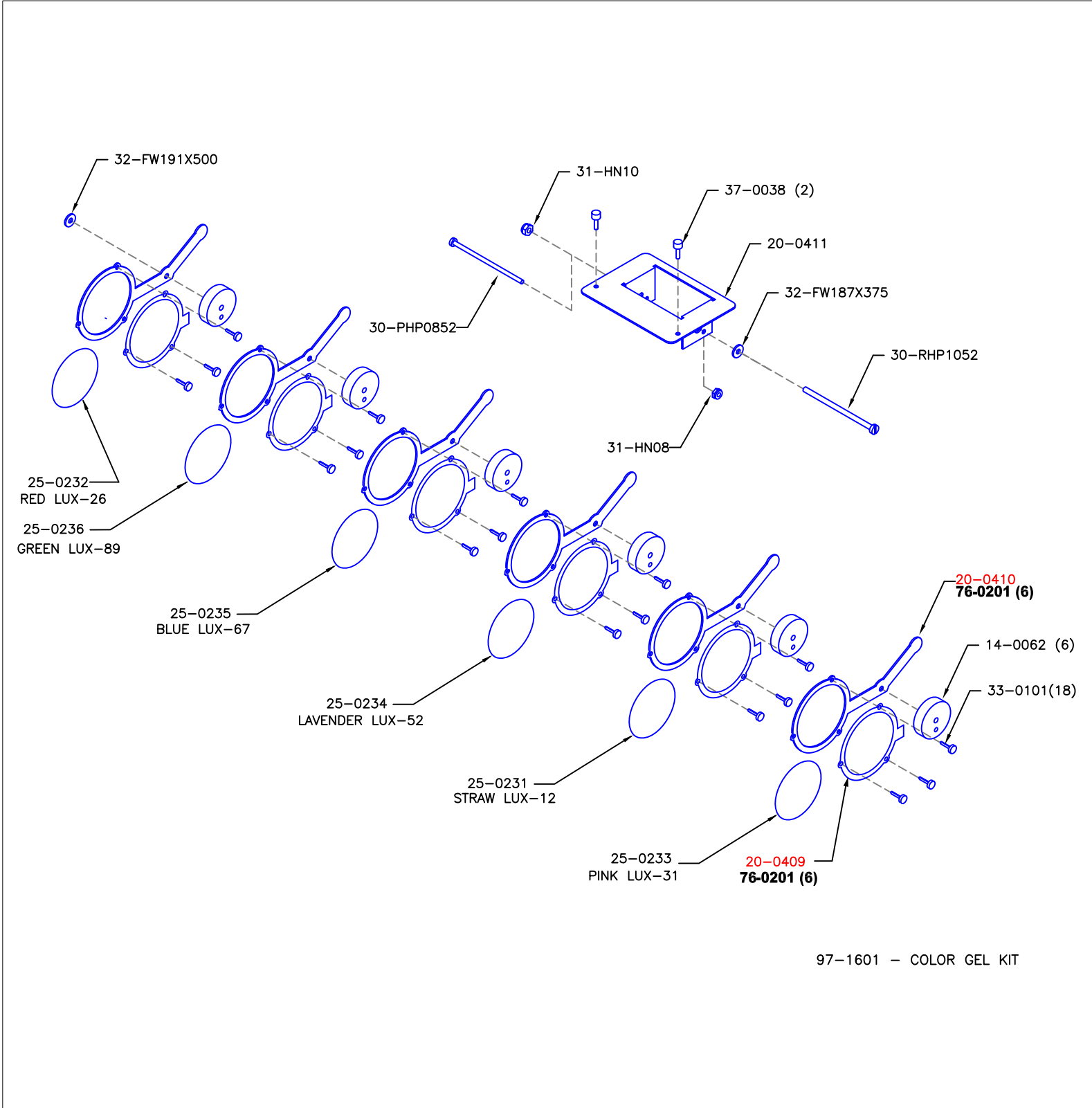
# ALTMAN

Altman Lighting Co. Inc.  
 57 Alexander St., Yonkers, NY, 10701  
 Ph: (914) 476-7987 Fax: (914) 963-7304  
<http://www.altmanltg.com>

# LUMINATOR COLOR CHANGER

Catalog No:	Assy No:	Description:	Revision:	Section:
77-0101		LUMINATOR COLOR CHANGER	F	6.1.5

Color Code: ● = Object ● = MFG. Number-Not for Sale ● = Obsolete ● = Part Number/Note **●** = Sub-Assembly



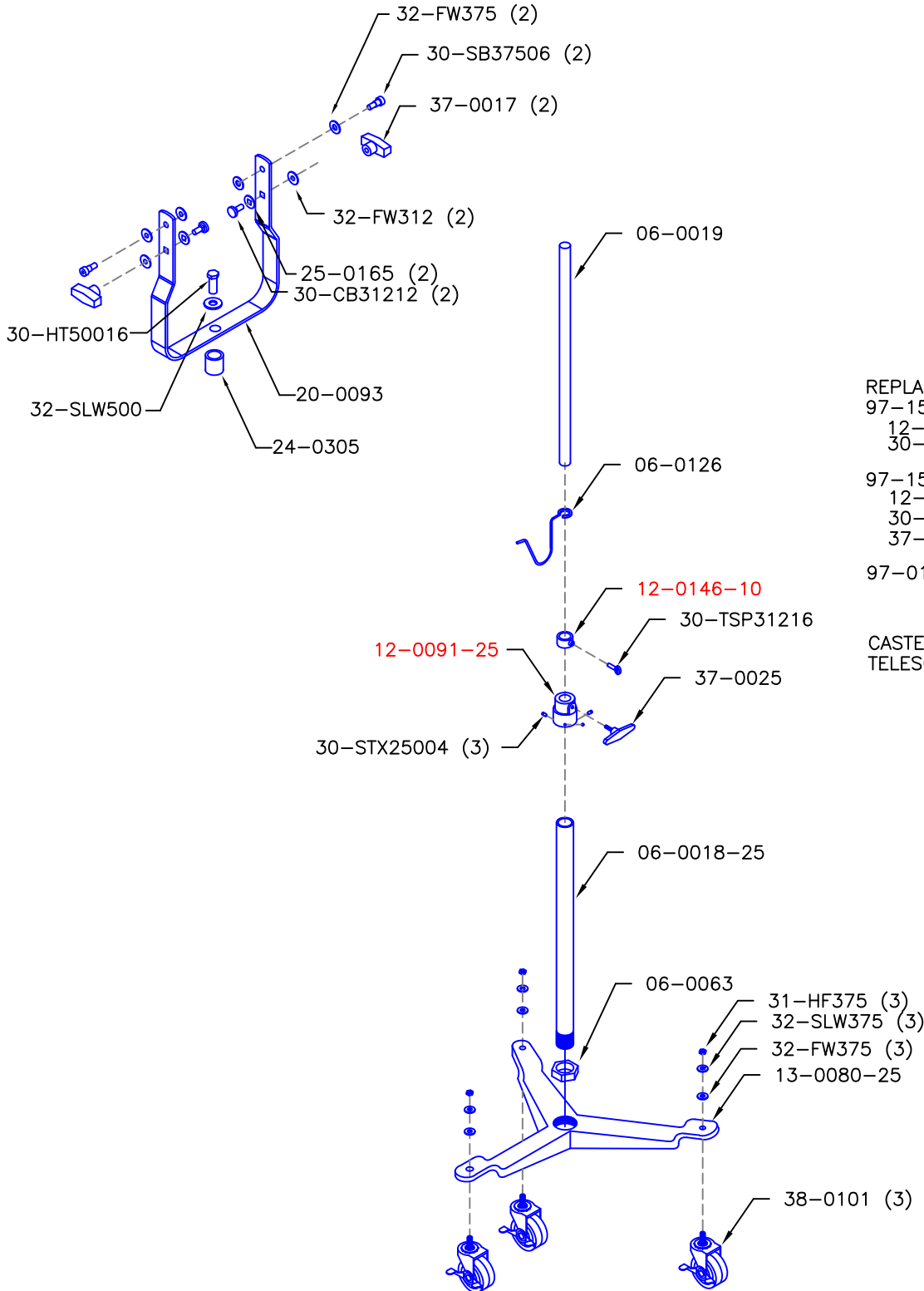
# ALTMAN

Altman Lighting Co. Inc.  
 57 Alexander St., Yonkers, NY, 10701  
 Ph: (914) 476-7987 Fax: (914) 963-7304  
<http://www.altmanltg.com>

# LUMINATOR STAND

Catalog No:	Assy No:	Description:	Revision:	Section:
78-0601		LUMINATOR STAND	G	6.1.6

Color Code: ● = Object ● = MFG. Number-Not for Sale ● = Obsolete ● = Part Number/Note **Bold** = Sub-Assembly



REPLACEMENT KITS:  
 97-1504 LOCKING COLLAR  
 12-0146-10  
 30-TSP31216

97-1501 BOTTLE NECK INCLUDES:  
 12-0091-25  
 30-STX25004 (3)  
 37-0025

97-0145 PIPE TO BOLT ADAPTER

CASTERED BASE ONLY: B-3-CB  
 TELESCOPING SUPPORT ONLY: 78-0603

# ALTMAN

Altman Lighting Co. Inc.  
 57 Alexander St., Yonkers, NY, 10701  
 Ph: (914) 476-7987 Fax: (914) 963-7304  
<http://www.altmanltg.com>