

## RECESSED CHALICE DOWNLIGHT

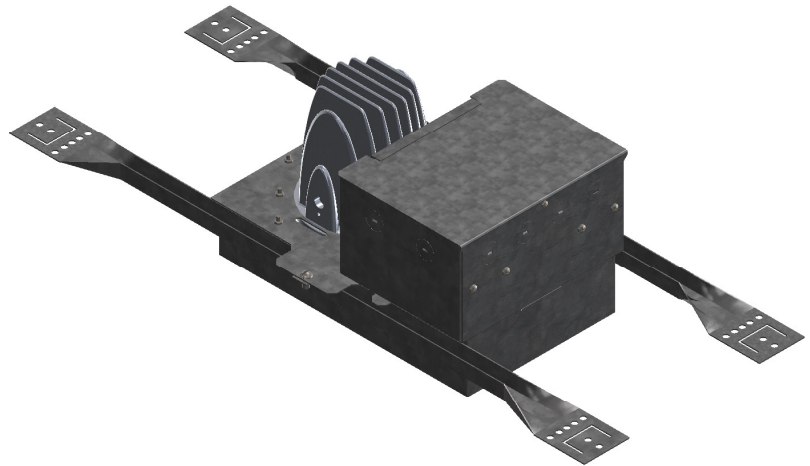
## WASH LIGHTING

Catalog Numbers  
CDR50-\*\_\*\*\_\*\*\*

The Recessed Chalice from Altman Lighting is a 50W LED architectural down light designed for permanent installation and energy savings. Changing lamps in your fixtures has now become a thing of the past.

Integration into an existing control system is easy with the simple three-button DMX addressing that is easily accessible from the bottom of the fixture: set it once and enjoy a smoothly integrated and energy efficient illumination solution for your area of choice.

The fixture is able to be controlled by your entertainment console, architectural control system or both; also available as a mains dimmable fixture for those facilities being built without a DMX control system, or for easy retrofit to a current installation for energy savings.

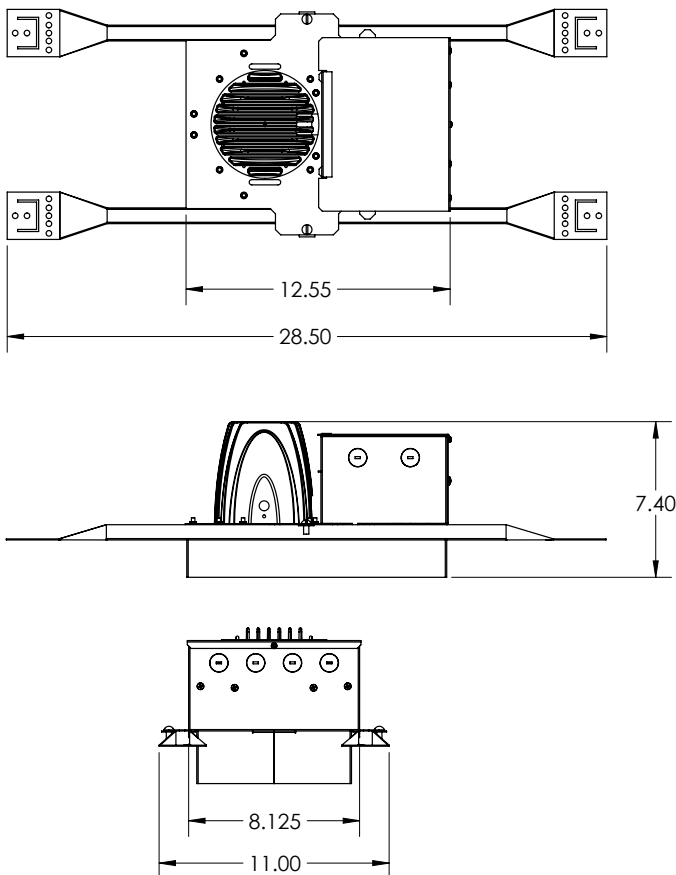


50 WATT

### RECESSED CHALICE DOWNLIGHT

#### Features

- Interchangeable lenses
- DMX or Mains Dimmable
- Push Button DMX Addressing and RDM compatibility
- DMX Pass through
- Flicker Free mode with 8-bit or 16-bit selectable operation
- Power: 50W LED driver
- Weight: Approx 10 lbs.
- ETL, cETL and CE Listed for Indoor Use
- Made in the USA



Model #	
CDR50-*_**_***	Chalice 50W LED Recessed Mount Downlight
* (LED Array)	Add the following code for LED Array: RGBA, RGBW, 3K, 3K6K
** (Body Color)	Add the following code for Body Color: B=Black, W=White, S=Silver, C=Custom
*** (Intensity Control)	Add the following code for Intensity Control: D=DMX, M=Mains Dimmable, (SCR)

**ALTMAN**  
Lighting  
BRINGING IMAGINATION TO LIGHT

Lumens for the Chalice - 3K LED Light Engine - 6,000 Lumens.  
Lumen maintenance is rated at 70% at 50,000 hours.  
Specifications are subject to change without notice.

57 Alexander St., Yonkers, NY 10701  
© 2012 Altman Stage Lighting, Inc.

Tel: 914-476-7987

Visit our website at [www.altmanlighting.com](http://www.altmanlighting.com)

**Specifications:**

**Materials:** Construction employs all corrosion-resistant materials and hardware.

**Housing:** Corrosion resistant aluminum outer shell with aluminum interior components.

**Light Engine:** Luxeon Rebel LED's, 50 Watt. Available in 3,000K White; 3,000K - 6,000K Variable White; RGBA or RGBW.

**Lenses:** 5" Diameter Acrylic conical

**Rating:** Multi-Voltage; 100-240V AC 50/60 Hz or Mains Dimmable Direct Driver compatible with SCR dimming modules. Rated for 50,000 hours.

**Data Ports:** 1 DMX in & 1 DMX through, Bare End Cat5. *(DMX version ONLY)*

**Trim Ring:** White, Black or Silver finish TGIC polyester, electrostatic application. Custom Colors available. Exterior diameter 7.75", interior diameter 5".

**Weight:** Approx. 10 lbs.

Model #	
CDR 50-*_**_***	Chalice 50W LED Recessed Downlight
* (LED Array)	Add the following code for LED Array: RGBA, RGBW, 3K, 3K6K
** (Body Color)	Add the following code for Body Color: B=Black, W=White, S=Silver, C=Custom
*** (Intensity Control)	Add the following code for Intensity Control: D=DMX, M=Mains Dimmable, (SCR)

Accessories	Description
CDP50-30SL	30° Spread Holographic Lens
CDP50-40SL	40° Spread Holographic Lens
CDP50-60SL	60° Spread Holographic Lens
CDP50-P95	P95 Diffusion Lens (~22°)
SS-8CDL-DMX-TERM	DMX 120-Ohm Terminator Kit

**WIRING DETAILS:**

