

Caution: Read and understand these entire instructions before proceeding.

Caution: Always wear safety goggles and gloves when servicing this equipment for any reason.

Caution: Disconnect unit from electrical supply before initial lamp installation, relamping, or servicing for any reason.

Caution: Do not expose unit to rain, or use in damp or wet locations. Always store indoors.

Caution: This luminaire is a source of intense heat and is not intended for residential use. Risk of fire or injury, avoid contact by persons or materials. If luminaire is hot, allow to cool before relamping.

Caution: Do not touch glass portion of lamp with your hands. Agents such as sodium, grease, or oil from your fingers may be transferred to the glass wall. These contaminants can cause lamp to rupture or can greatly reduce the performance and life of the lamp. If accidentally soiled, immediately clean the lamp with a soft, clean, lint-free cloth soaked in methylated spirits (denatured alcohol), and then polish with a dry, soft, clean, lint-free cloth.

Caution: Do not allow materials to come in contact with hot lamp. Protect lamp from abrasions and scratches. These lamps reach very high temperatures (as high as 1740°F [950°C]). Under certain circumstances, internal or external influences may cause lamp to rupture.

ALTMAN SHAKESPEARE® SERIES

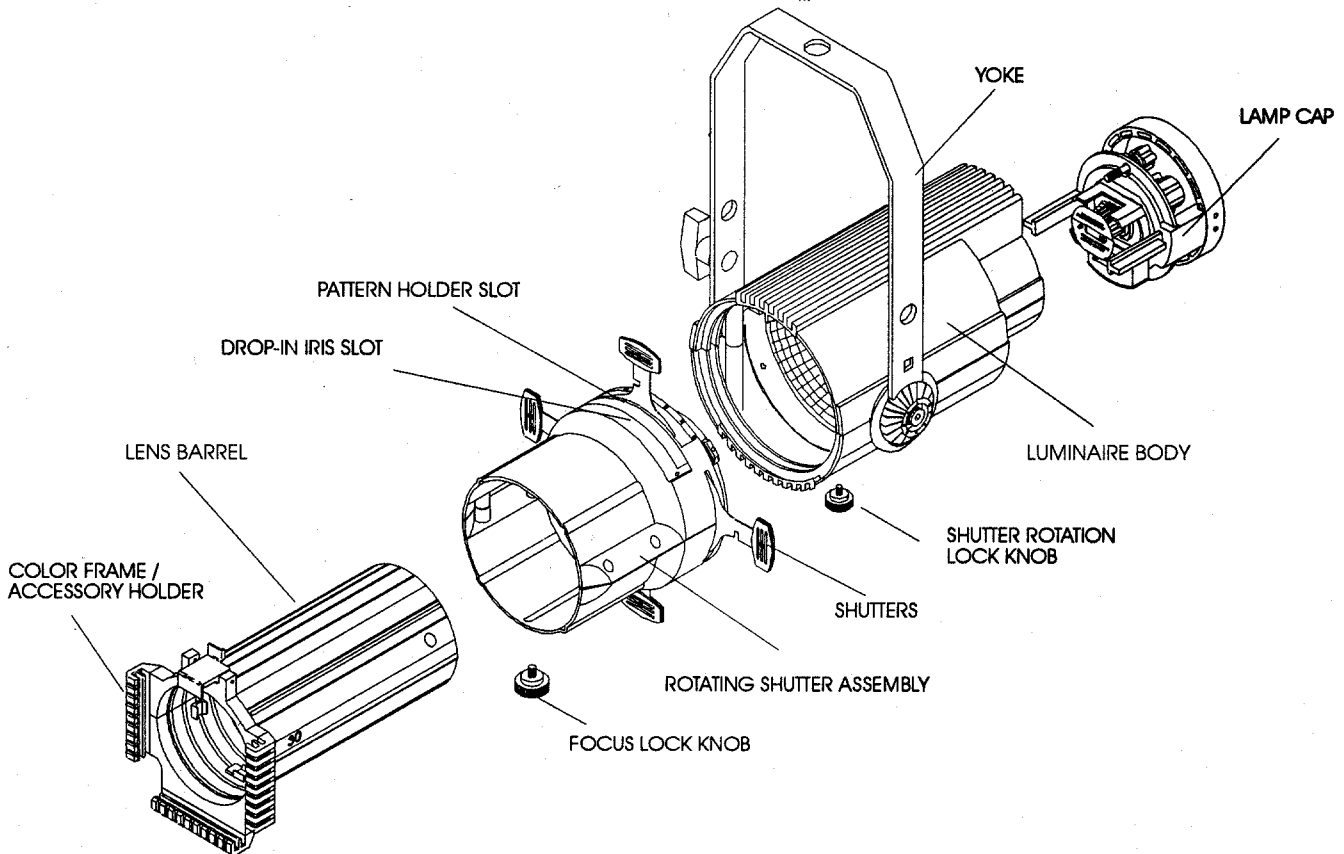
Ellipsoidal Spotlight

INTRODUCTION

Congratulations on purchasing one of the finest lighting instruments available today! Before using your Shakespeare Ellipsoidal Spotlight, be sure to read all of the instructions in this manual.

SAFETY INSTRUCTIONS

SAVE THESE INSTRUCTIONS FOR FUTURE USE!



ALTMAN

THE QUALITY OF LIGHT

Altman Stage Lighting Company, Inc.
57 Alexander Street, Yonkers, NY 10701

914-476-7987

212-569-7777

FAX: 914-963-7304

SPECIFICATIONS SUBJECT TO CHANGE WITHOUT NOTICE. COPYRIGHT ©1997 ALTMAN STAGE LIGHTING CO., INC. ALL RIGHTS RESERVED. ALTMAN™, THE QUALITY OF LIGHT®, ALTMAN STAGE LIGHTING™ AND SHAKESPEARE® ARE TRADEMARKS OF ALTMAN STAGE LIGHTING CO., INC. SHAKESPEARE PROTECTED BY US PATENT NOS. 5,345,371 AND D364,001 AND OTHERS PENDING.

ALTMAN SHAKESPEARE® SERIES

Ellipsoidal Spotlight

■ INSTALLING THE LAMP Figure 1

CAUTION: Do not use any lamps exceeding 750 watts, or permanent damage will result!

CAUTION: Do not touch glass portion of lamp with your hands!

CAUTION: Disconnect fixture before relamping!

1. Loosen captive cap screw until it spins freely.
2. Turn lamp cap a quarter turn counterclockwise and pull it straight out from luminaire body.
3. With protective wrap still in place, grasp lamp at base and gently push into socket until firmly seated.
4. If necessary, heat shield can be opened by lifting leaves off screwless post.
5. Remove protective wrap from bulb and replace lamp cap into luminaire body. Give it a quarter turn clockwise and tighten cap screw.

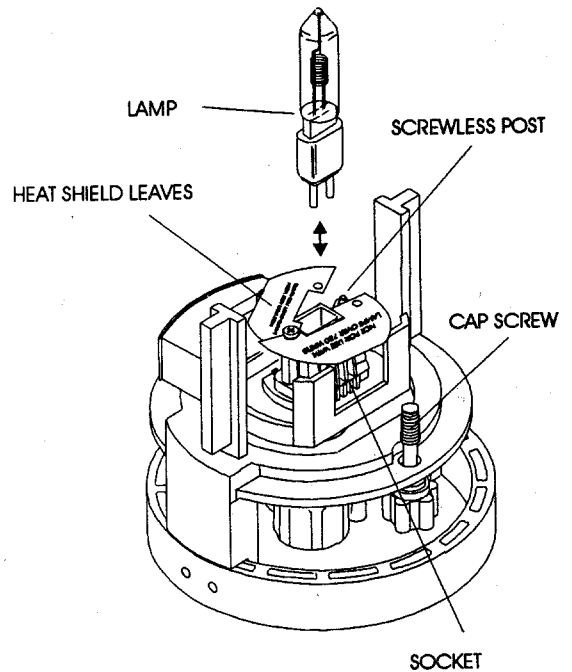


Figure 1

■ USING SHORT YOKE POSITION Figure 2

1. Remove T-handle and its associated hardware.
2. Remove yoke bolts, cup washers, and pivot covers.
Note: Use a 1/4" hex head wrench to remove yoke bolts.
3. Stretch yoke and snap it into short yoke position.
4. Replace pivot covers, cup washers, and yoke bolts.
5. Replace T-handle into square hole, keeping the washer between handle and yoke.

■ ADJUSTING YOKE Figure 2

1. With one hand on ring handle to hold unit, loosen T-handle.
2. Tilt unit to desired angle.
Note: Reference angles have been stamped on the pivot cover to make adjustments easier and more precise.
3. Tighten T-handle to secure fixture in place.

■ ROTATING SHUTTER ASSEMBLY Figure 2

1. Loosen shutter rotation lock knob on underside of luminaire.
2. Rotate shutter assembly 90° in either direction.
Note: Reference angles have been stamped on the pivot cover to make adjustments easier and more precise.
3. Tighten shutter rotation lock knob to secure shutter assembly.

■ INSTALLING C-CLAMP Figure 2

The C-clamp is used to mount the luminaire to a pipe. The C-clamp attaches to the top of the yoke via the 1/2" bolt provided with the clamp. Be sure to keep the washer between the bolt head and the yoke.

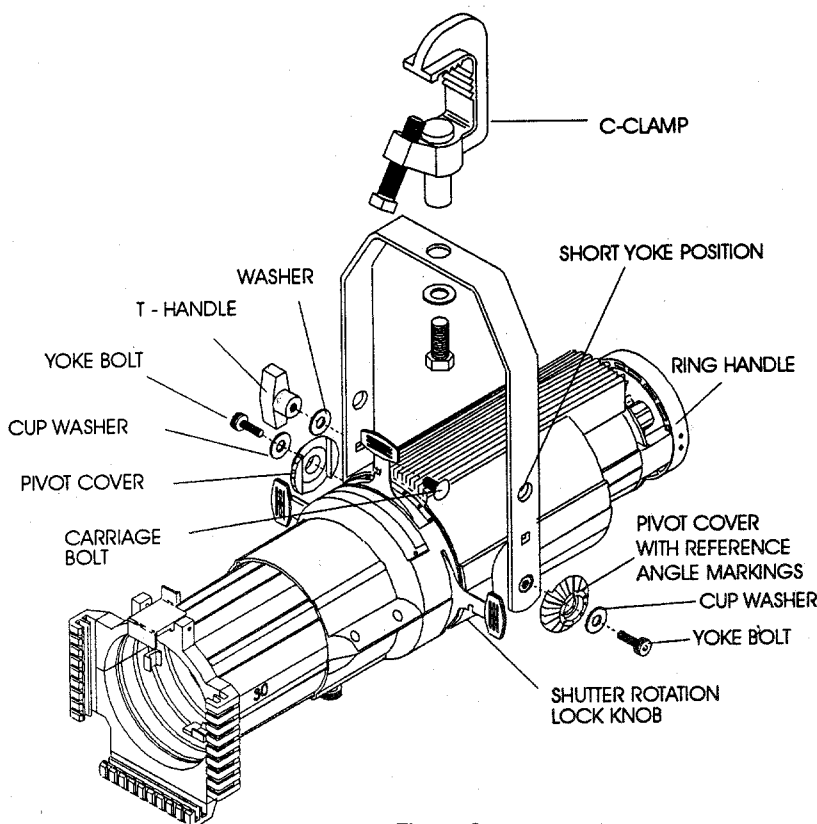


Figure 2

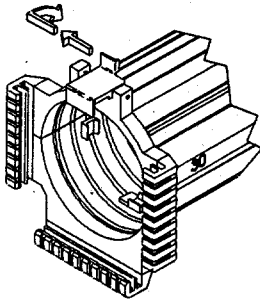


Figure 3

■ ACCESSORY RETAINING LATCH Figure 3

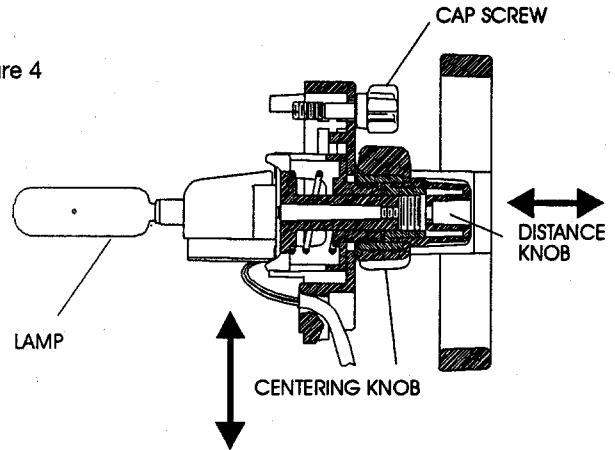
This unique retaining latch is designed for positive locking and automatic return.

1. Slide clip to right side.
2. Swing latch back.
3. Insert accessory.
4. Release latch. Latch will lock automatically.

■ ADJUSTING LAMP Figure 4

1. With power on and all four shutters open, shine light onto a surface perpendicular to fixture and adjust for sharp focus.
2. Rotate distance knob all the way to the left to put unit into peak focus.
3. Loosen centering knob slightly and adjust so that hot-spot is in center of beam of light. Tighten centering knob to lock lamp in place.
4. Turn distance knob to the right until desired field is achieved. The more you turn to the right, the flatter the field will get.

Figure 4



■ DROP-IN IRIS SLOT Figure 5

This larger slot can accept either a drop-in iris or a motorized pattern device (gobo rotator, yo-yo, etc.) The slot has a retractable cover to prevent light leak when not in use. When a device is used, the cover should be closed to the edge of the device in the slot. When a drop-in iris is used, always place it so that the flat side is facing the shutters.

■ CLEANING THE REFLECTOR Figure 5

1. Remove lamp cap from luminaire.
2. Remove four screws from underside of luminaire body.
3. Lift off top half of luminaire body.
4. Dampen a clean lint-free cloth with alcohol and gently wipe reflector clean.
Note: Be careful to align teflon glides in rotating shutter assembly track.
5. Align reflector baffle with locating post, replace luminaire body top.
6. Re-install four screws in luminaire body.

WARNING: Never use glass or window cleaner or any abrasive material to clean the reflector. Use of these items will damage the reflector.

■ PATTERN PROJECTION Figure 5

The pattern holder slot accepts standard 1KL or 360Q "A" & "B" size pattern holders. The image of the pattern can be rotated 90° in either direction. The use of a donut will sharpen the image.

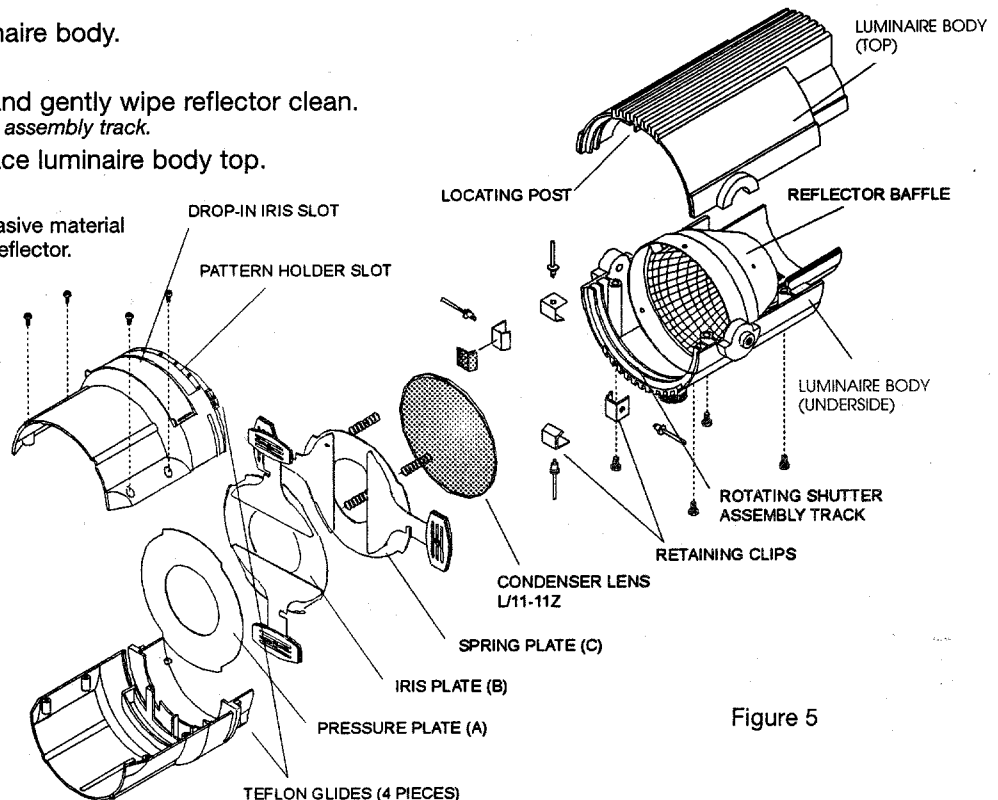


Figure 5

■ INSTALLING SHUTTER PLATES Figure 5

- A. Pressure Plate (completely flat):**
Install such that the tabs are on top and bottom.
- B. Iris plate (tabs are bent in opposite directions):**
Install so that top and bottom tabs bend away from the tabs of the pressure plate.
- C. Spring Plate (has four raised points):**
Install with tabs on left and right and raised points facing away from iris plate

■ CONDENSER LENS CARE Figure 5

The condenser lens is used to help even out the intensity of the field.
To replace or clean lens:

1. Follow previous steps 1-3 to remove rear housing.
2. Remove the four screws through the top shutter assembly housings and separate.
3. Replace or clean lens with mild soap and water, and a soft, lint-free cloth.
4. Reverse procedure to re-assemble.

WARNING: Never use glass or window cleaner or any abrasive material to clean a lens. These types of cleaners will stain the lens surface. Abrasive materials will damage the surface of the lens.

■ REPLACING SHUTTERS Figure 6

1. Place shutter tip (notched-side) between the two metal plates and insert.
2. Align notch in shutter with edge of slot.
3. Swing opposite tip into slot.
4. Push shutter in the rest of the way and pull notch off edge of slot.
5. Reverse procedure to remove shutters.

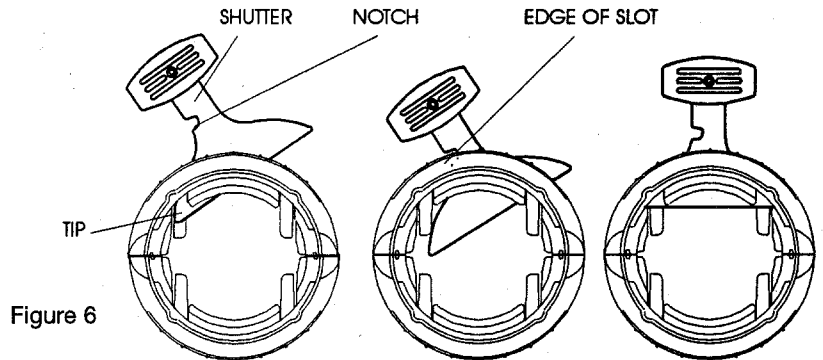


Figure 6

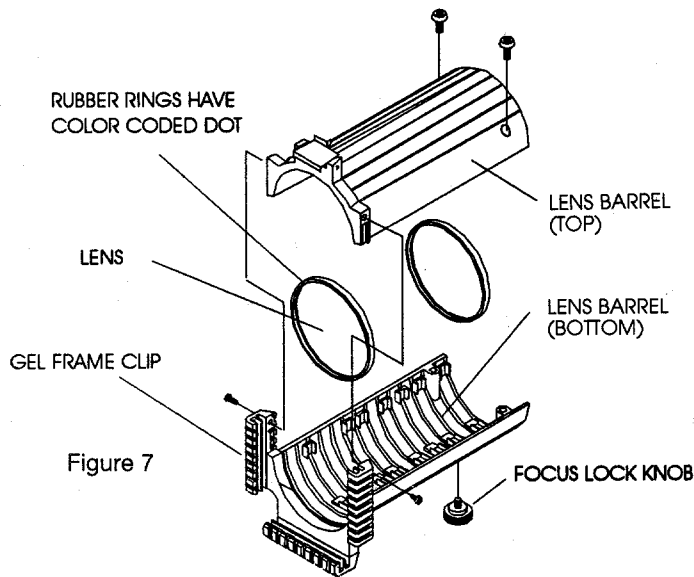


Figure 7

■ CLEANING/REPLACING LENSES Figure 7

1. Remove focus lock knob, push in safety pin, and slide lens barrel out.
2. Remove top two screws from side gel frame clips and two screws at rear holder.
3. Carefully remove top half of barrel.
4. Replace or clean lenses with a mild soap and water, and a soft, lint-free cloth.
5. Replace top half of barrel and re-install screws.
6. Push in safety latch, slide lens barrel back into unit, and replace focus lock knob.

WARNING: Never use glass or window cleaner or any abrasive material to clean a lens. These types of cleaners will stain the lens surface. Abrasive materials will damage the surface of the lens.

