

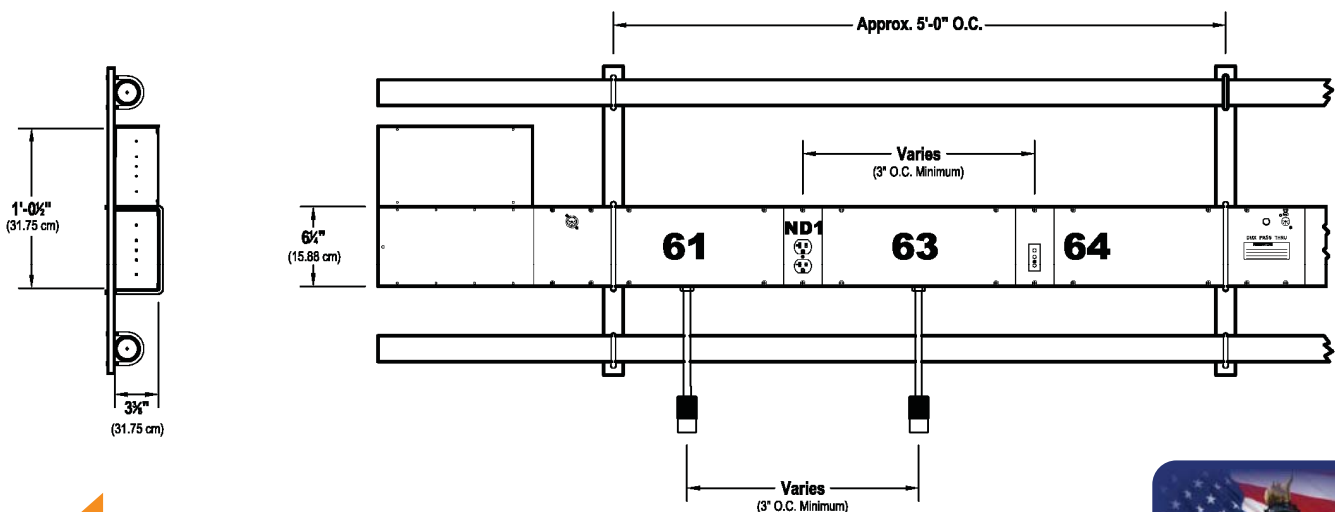
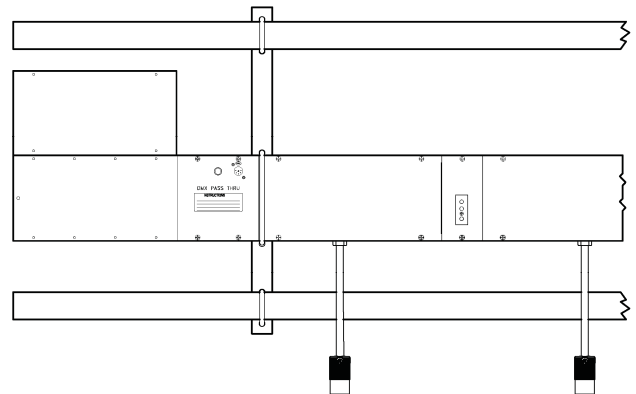
POWER DISTRIBUTION CONNECTOR STRIPS 450*CUS

Altman Lighting's 450 Series Connector Strips feature rugged steel construction, innovative data distribution, and a wide array of available connector types and hanging hardware. Each Connector Strip is custom built for the specifications of the project.

Pigtail and flush mount load connectors are pre-wired to spring loaded terminals at the feed end of the strip. Connector Strips are available with Active and Passive DMX-512A/RDM and Ethernet Data management and can be mounted horizontally or vertically, dead hung or attached to movable rigging sets. The 450 is suitable for installation in theatres, television studios, or anywhere a system of permanent circuit distribution and data distribution for conventional, LED, and automated luminaires are desired.

Product Features:

- Rugged 18 gauge steel construction with 14 gauge end caps and joiners. Center holes on end caps provided for conduit fittings
- A variety of flush mount and pigtail connectors are available for 20A, 30A, 50A, and 100A circuits. Individual circuits can be wired to multiple pigtails or receptacles.
- Active or passive data management for distribution of DMX-512A/ RDM to distributed dimmers, automated fixtures, and LED Luminaires.
- Optional per circuit indicator lamps available.
- Easy to ship, assemble, and service
- 1-Tool Assembly (#2 Phillips Screwdriver)
- DIN Rail mounted screw-less spring terminals for termination of 20A loads (up to #8 AWG). Screw terminals for 30A, 50A, and 100A wiring.
- DIN Rail mounted control box for integration of DMX-512A/ RDM Opto Splitters, Ethernet nodes, and other DIN rail mounted control devices.
- Standard 2" high white vinyl numbers for circuit identification on one side. Numbering on both sides, custom vinyl colors, and lamicoiid circuit identification plates are available.
- cETLus Listed
- Made in the USA.



Specifications

General:

- Available in standard and custom lengths. Connector Strips over 6-feet come folded in sections, packaged for quick assembly.
- Active and Passive Data Management available for DMX-512A / RDM and Ethernet control signals.
- Flat Black Finish. Custom colors are available - consult factory
- Standard 2-inch high white vinyl numbers for circuit identification on one side. Numbering on both sides, custom vinyl colors, and lamicoid circuit identification plates are available.
- cETLus Listed

Physical:

- 18 gauge steel construction with 14 gauge end caps and joiner pieces.
- 20 gauge electro-zinc DMX (low-voltage) barrier
- 0.125-inch Center holes on end caps for conduit fittings
- DMX & Flush Receptacle panels are on 3-inch centers. Pigtails are on 1.5-inch centers.
- All DIN Rail mounted components.

Data Management Options:

- No DMX: No data distribution and management is built into the connector strip.
- Passive DMX (non-Opto Isolated): Up to (4) individual DMX-512A / RDM Data Lines can be run through the strip to flush-mounted XLR connectors. "Pass-thru" panels are provided for multiple receptacles on a single data line.
- Active DMX: DMX-512A/RDM Data is distributed throughout the strip from a single source via Pathway eDIN Opto-Isolators mounted in the control box.
- Ethernet distribution solutions (integrated switches, Ethernet to DMX nodes, etc.) are available.
- Hardwired and optional XLR Receptacle data inputs available at control box.

Power Input:

- Circuits in the Connector Strip are pre-wired to a junction box, which contains DIN-rail mounted terminal strips for easy installation.
- DIN Rail mounted screwless spring terminals for termination of 20A loads (up to #8 AWG). Screw Terminals for 30A, 50A, and 100A wiring.
- Second Terminal Box added for configurations with more than (24) 20A circuits.
- 19-Pin Socapex/ VEAM power feed connections are available.

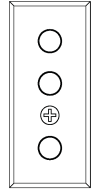
Connector Options:

- Pigtail or Flush Mount 20A Stage Pin connectors
- Pigtail or Flush Mount "Edison" (NEMA 5-15 and 5-20 connectors)
- Pigtail or Flush Mount Twistlock (NEMA L5-15 and L5-20 connectors)
- Other connectors including L620, 19-Pin Socapex/ VEAM, 30A, 50A, and 100A connectors are available.

Power Receptacles

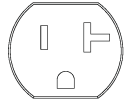
Stage Pin (GSP)

20A, 50A, or 100A Stage Pin Receptacle (20A shown)



Parallel Blade (PBG)

Parallel Blade or "Edison" receptacle (NEMA 5-20) will mate with NEMA 5-15 and NEMA 5-20 Plugs.



Twistlock (GTL)

20A Twistlock Receptacle, NEMA L-520

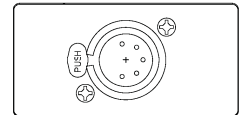


NOTE: All Connectors shown here are available in either Flush mount or Pigtail configurations. Standard pigtail lengths are 18-inches. Custom Pigtail lengths are available (consult factory). Other connector types and configurations are available. Contact Altman lighting for additional information.

Data Receptacles

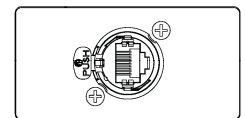
Female 5-Pin XLR (DMX/RDM)

Flush mounted female 5-Pin XLR for distribution of isolated and non-isolated DMX-512A/RDM Signals.



Ethercon RJ-45 (Ethernet)

Flush mounted RJ-45 connector in XLR shell for distribution of Ethernet Control signals.



DMX Pass Thru

Male and Female 5-Pin XLR Receptacles with push button switch to connect (pass thru) and disconnect them.

