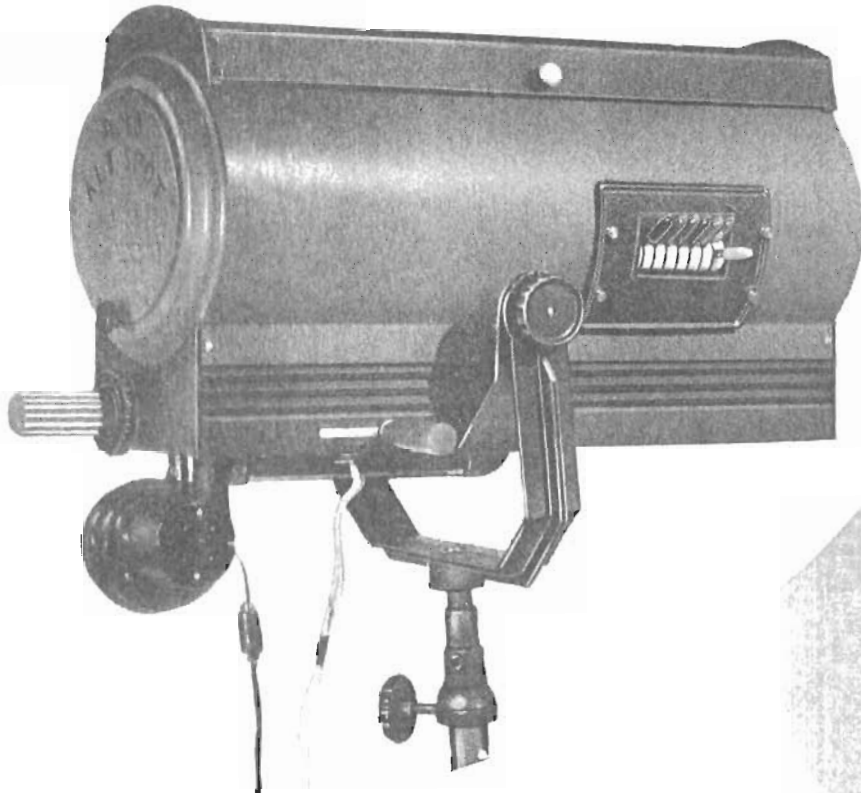


2100 SUPERSPOT

BUILT-IN
DOWSER

FINGER
TIP
COLOR
CONTROL

BEAM
SHAPE
CONTROL



"COLOR
SIGNAL"
HANDLES

BUILT-IN
HEAT-
RESISTING
IRIS

VERSATILE

ALTMAN STAGE LIGHTING, Inc.
145 WEST 24th STREET • NEW YORK 11, N. Y.

2 1 0 0 S U

VERSATILE

FINGER
TIP
COLOR
CONTROL

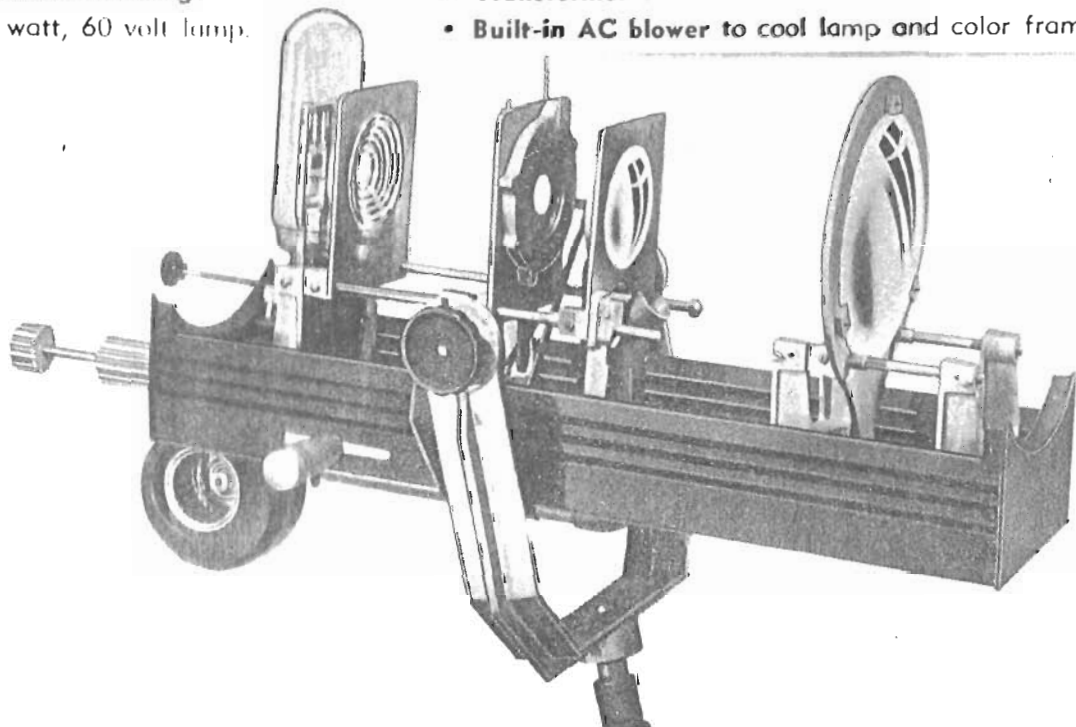
"COLOR
SIGNAL"
HANDLES

BY ACTUAL COMPARISON THE MOST POWERFUL INCANDESCENT SPOTLIGHT ON THE MARKET
Engineered for theatres, educational institutions, auditoriums, night clubs, hotels, TV studios.

So simple in design . . . even inexperienced operators can handle the "2100" at 5 minutes notice.

So effective . . . so versatile . . . so sturdy . . . the 2100 SUPERSPOT solves all normal spotlight problems and assures years of problem-free operation.

- **For spot or flood lighting** . . . distances up to 150 feet.
- **Precision triple lens system:** One prismatic, one 4½" plano convex, one 8" plano convex. Designed for uniform brilliance. Increases or decreases beam size without loss of intensity. Beam edges stay crisp and clean.
- **Easy-to-reach control handles.**
- **Uniformly illuminated snow white spot** can be adjusted from 18" head spot at 150 feet to full stage floor as controlled by following handle.
- **Ultra-fast color control unit** with six colors and one douser. Plastic colored "signal" handles correspond to colors of the gelatines they control. Other colors obtainable by combining two or more.
- **Built-in framing shutter with rear control** for extra-easy operation.
- **Rear controlled, built in heat-resisting iris.**
- **Iris and shutter controls** produce the variety of beams shown in diagram.
- **Ventilation louvres** run full length of lamp bottom. Louvred door and top for ventilation and for easy replacement of lamp.
- **Compact, modern housing.**
- **Transformer to convert 110-120 volt current to 60 volts.**
- **Built-in AC blower to cool lamp and color frames.**
- Uses 2100 watt, 60 volt lamp.



P E R S P O T

**BUILT-IN
HEAT-
RESISTING
IRIS**

**BEAM
SHAPE
CONTROL**

**BUILT-IN
DOWSER**

#2100 SUPERSPOT

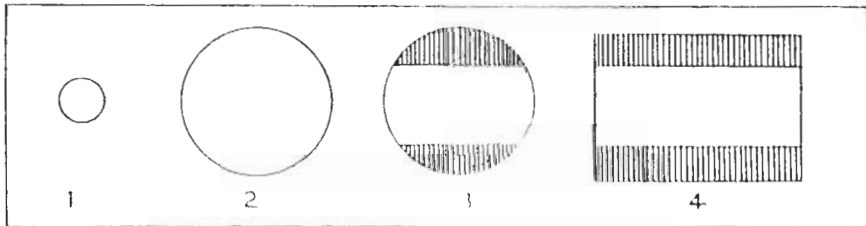
Spotlight housing 36" over all. 13" diameter lens.
Heavy duty underslung three leg base on
3 rubber-tired ball bearing casters.

25 ft. rubber cable and plug, UL approved.

Weight only 138 lbs. complete.

NET PRICE \$600.00

F. O. B. New York, N. Y.



THE VARIOUS BEAM CONTROLS CAN BE OBTAINED BY ADJUSTMENT OF IRIS AND SHUTTER CONTROLS

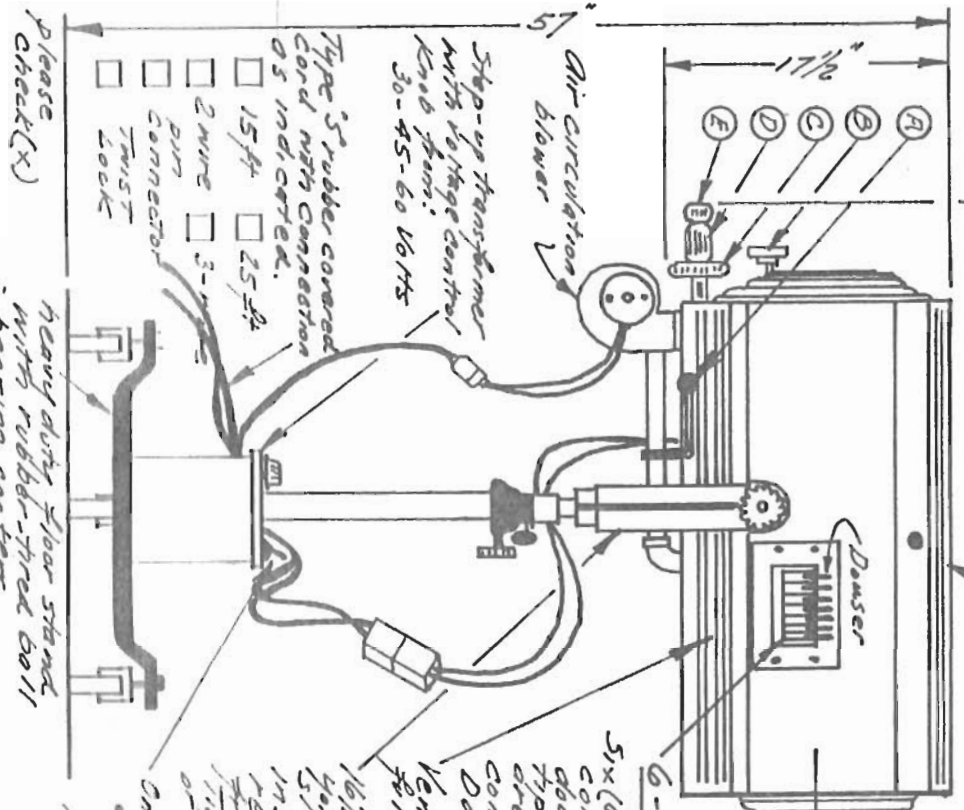
1. Head spot of any size
2. Flood, with all controls open
3. Flood with iris and masking shutter partly closed
4. Flood with iris open and masking shutter partly closed

Superspot-2100-

Hinged lensed
cover for lamp
replacement 39"

- 3-Lens System
 1- Prismatic
 1- 4 1/2" Plano-convex
 1- 8" Plano-convex

Sheet No. 11B



Please check(x)

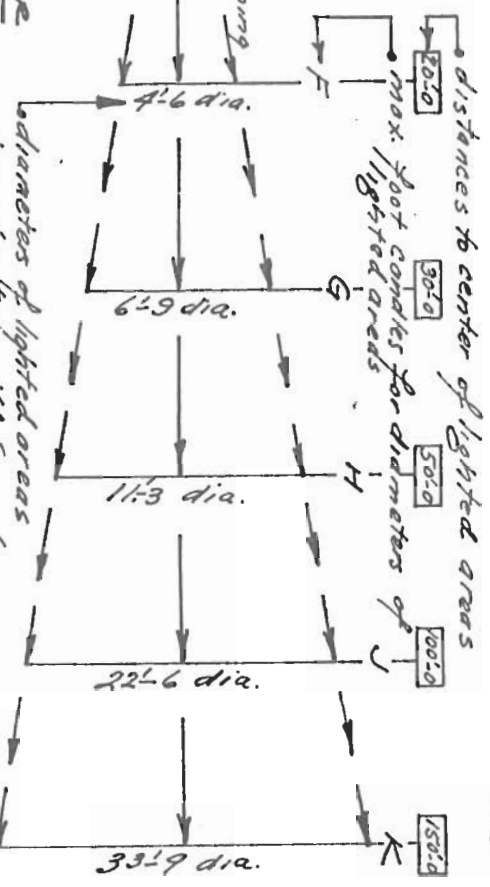
- 15 ft
- 25 ft
- 2 wire dim
- 3-wire dim
- connector
- twist
- lock

- A- Spread lens control
- B- Lamp base tightener
- C- Framing shutter control
- D- Iris shutter control
- E- front lens focusing lens

6- Colors

Six (6) different colors (one (1) douser with finger tip controls. Other colors are available by combining two (2) or more. Douser used for fadeouts.

distances to center of lighted areas



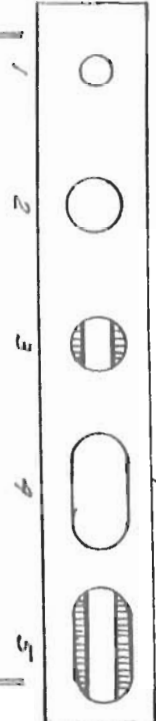
Ventilation bournes

16" wide at yoke - hole support with 5 slotted openings for instant setting or removal of housing from yoke or stand. Lighter or heavier knob or nut to suit.

2-Tone - Black & Grey Hrinkled finish.

Average conditions are assumed on all calculations. Average sizes as shown - about 25% of max at edge of beam. Weight - 138 lbs complete

Type of lamp	F	G	H	J	K
2100 W T24 C130 spot	295	585	215	49	25



The various beam controls can be obtained by adjustment of iris and shutter controls

1. Hood Spot of any size.
2. Flood with all controls open
3. Flood with iris and masking shutter partly closed.
4. Elongated flood with spread lens in position - both shutters open
5. Very wide spread with cutoff by masking shutter for flood lighting.

Heavy duty floor stand with rubber-tired ball bearing casters

On Eddy toggle switch
 Spot lamps
 No. 6 post - basedown
 2100 Watts - T24
 C130 filaments
 Specify when ordering
 Lamp Lx H Hours 50
 Lumens - approx - 65000
 60 Volts