

ASL-E1 Series 120V, Single Circuit Track Lighting System

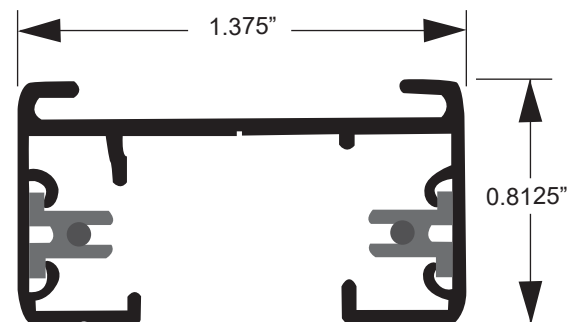
Altman Lighting is proud to offer the ASL-E1 Series track lighting systems. The ASL-E1 Series is based on the Global GES/eco track from Nordic Aluminum.

Global GES 1-circuit/1-neutral is engineered to be a durable, dependable and simple-to-install lighting solution. The track's extruded aluminum construction and continuously crimped conductor ensure mechanical strength and electrical reliability. The integral suspension rail and predrilled mounting holes of the track simplify the installation process.



Product Features:

- High quality, UL listed 1-circuit/1-neutral lighting track system for 120VAC applications
- Low profile, easy and flexible installation - ideal for your designed track fixtures
- Multiple Mounting Options including Pendant, Aircraft Cable, and Direct Ceiling
- Predrilled Mounting Holes - all track ships from the factory with predrilled mounting holes spaced per UL and NEC guidelines.
- Track can easily be cut in the field
- Multiple options for track coupling allowing for just about any layout design
- Feed connectors with a patented backplate suspension contact - unique backplate feature provides additional strength by mechanically integrating track and connectors into one continuous system
- Complete line of:
 - Live End Feeds
 - Dead End Caps
 - In-Line Couplers
 - Feed Thru Connections
 - L-Turns (left and right)
 - Flexible Couplers
 - "X" Connectors
 - "T" Connectors
- Extruded channel constructed of strong, extruded aluminum. Impervious to corrosion.
- Available in black, white and silver (natural finish)
- cULus Listed and CE marked for indoor use
- Two-year warranty



ASL-E1 Series Track

ASL-E1 Series 120V Track Lighting Accessories



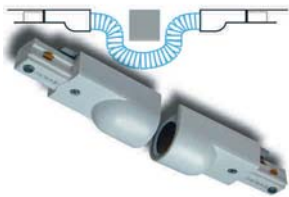
Live End Feed, 120V
(ASL-E111*)



Conduit Feed, 120V
(ASL-E113*)



Live (In-Line) Middle Feed, 120V
(ASL-E114*)



Conduit Continuation Kit, 120V
(ASL-E113/16*) - *Jumpers track around obstacles. Conduit not included and by others.*



Junction box not included and by others.

T-Bar Feed Kit, 120V (ASL-117*) - 5" x 5"
For use with ASL-E111, ASL-E114*, ASL-E134*, ASL-E138*, ASL-E140**



Linear Coupler, 120V
(ASL-E121*)



Flexible Connector, 120V
(ASL-E123*)



Adjustable/Feed-Able L Connector, 120V -
Adjustable Left or Right Polarity (ASL-E134*)



Feed-Able X Connector, 120V
(ASL-E138*)



Feed-Able T Connector, 120V - Adjustable
Left or Right Polarity (ASL-E140*)



Dead End Caps (ASL-A41*) -
Included with live end feeds, conduit feeds, linear couplers, straight feed connectors and L, T, & X feed connectors. May also be ordered separately.



Outlet Box Cover - 5" x 5"
(ASL-A15*)

ASL-E1 Series 120V Track Lighting Accessories



Floating Feed, 120V - 5" x 5"
(ASL-E167*)



Monopoint, 120V - 5"
(ASL-E170*)



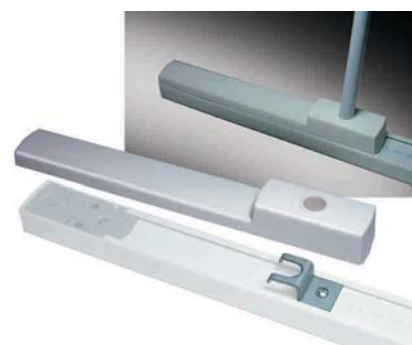
Threaded Rod Mounting Clip (ASL-A6) -
*For 1/4" threaded rod (by others) and
for use with ASL-E1 series track only.*



T-Bar Mounting Clip (ASL-A7) -
For use with ASL-E1 series track only.



Universal Stem Suspension
Point (ASL-A10*)



End Feed Stem Suspension Point, 120V
(ASL-A11*) - *Includes bracket and
cover. Stem is not included.*



Pendant Stem Kits -
Includes stem, canopy, and hardware
(ASL-S3712* / 12-inches long)
(ASL-S3718* / 18-inches long)
(ASL-S3724* / 24-inches long)
(ASL-S3748* / 48-inches long)
Attachment point to track sold separately.
For use with ASL-E1 mounts only.
*Custom lengths available. Contact your
regional sales manager for assistance.*



Circuit Track Adapter, 120V
(ASL-E166*)

Ordering Information

ASL-E1 Series 1-Circuit, 120V Track

The track and accessories are available in black or white powder coat or silver anodized (as noted).

ASL-E1 Series Track - 1 Circuit (120V) Track System

Model	Description
ASL-E166*	1 Circuit, 120V Track Adapter Installed

*Note: * Add one of the following codes for track finish: -2 Black, or -3 White.*

1 Circuit, 120V Track (1 Hot & 1 Neutral)

Model	Description
ASL-E104*	4' (Actual Length 44") Surface Mount, 1 Circuit Track
ASL-E108*	8' (Actual Length 92") Surface Mount, 1 Circuit Track
ASL-E112*	12' (Actual Length 140") Surface Mount, 1 Circuit Track

*Note: *Add one of the following codes for track finish: -1 Silver (natural finish), -2 Black, or -3 White.*

ASL-E1 Series 1-Circuit, 120V Track Accessories

Model	Description
ASL-E111*	Live End Feed
ASL-E113*	Conduit Feed
ASL-E114*	Straight (In-Line) Feed Connector
ASL-E113/16*	Conduit Continuation Kit
ASL-E117*	T-Bar Feed Kit
ASL-E121*	Linear Coupler
ASL-E123*	Flexible Connector
ASL-E134*	Adjustable L-Connector
ASL-E138*	X-Connector
ASL-E140*	Feed-able T-Connector (Right/Left Configuration)
ASL-A41*	Dead End (Spare Only)
ASL-A15*	Outlet Box Cover
ASL-E167*	Floating Feed
ASL-E170*	Monopoint

*Note: *Add one of the following codes for track finish: -1 Silver (natural finish), -2 Black, or -3 White.*

ASL-E1 Series 1-Circuit, 120V Track Mounting & Suspension

Model	Description
ASL-A6	Threaded Rod Mounting Clip
ASL-A7	T-Bar Mounting Clip
ASL-A10**	Universal Stem Suspension Point
ASL-A11**	End Feed Stem Suspension Point

Notes:

***Add one of the following codes for track finish: -2 Black, or -3 White.*

ASL-E1 Series 120V Track - Pendant Stem Kits

Model	Description
ASL-S3712**	12", Stem and Canopy Kit
ASL-S3718**	18", Stem and Canopy Kit
ASL-S3724**	24", Stem and Canopy Kit
ASL-S3748**	48", Stem and Canopy Kit

Notes:

*** Add one of the following codes for track finish: -2 Black, or -3 White.*

Custom stem lengths available (up to 9'). Contact your regional sales manager for assistance.