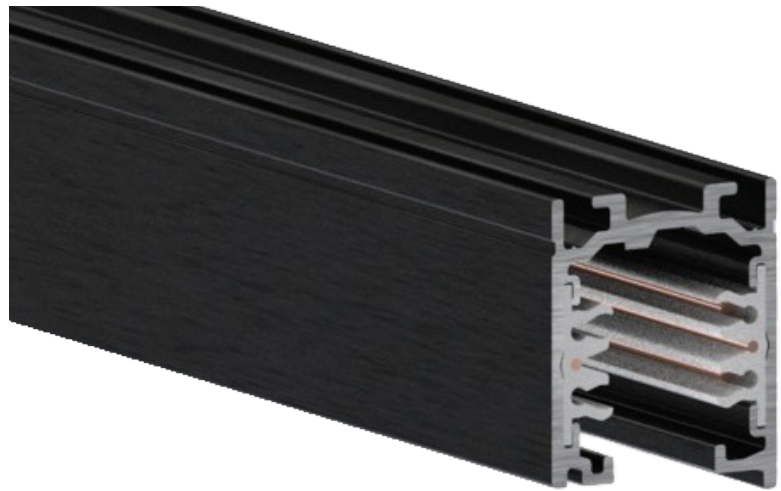


# SMART TRACK

Altman Smart Track™ is a revolutionary way to bring **DMX, DALI, and 0-10 Volt control\*** to LED track luminaires, both architectural and theatrical. Smart Track offers lighting professionals the simplicity of traditional 2-circuit track lighting systems, but also supports these modern control standards. The Smart Track system carries both power and data on the same track system, eliminating the need for data wiring to each fixture. Smart Track lighting system works with numerous Altman luminaires, including Gallery Wash and Profile, Siren Series Zoom Par, Pegasus 6" LED Fresnel, Spectra Cyc 50, and others.



Smart Track is an extruded aluminum track system that can be surface mounted, recessed, or suspended on a flat, level surface.\*\* It can be integrated into existing designs to transform spaces into a more sleek, modern look. It is ideal for demanding applications where a low profile look is desired, and flexibility is required for changing fixture locations either regularly or occasionally. When used with digital controls like DMX and DALI, Smart Track allows high resolution independent control of each fixture. Luminaires can be assigned a unique DMX address at the fixture, or remotely via RDM (Remote Device Management). Altman Smart Track luminaires retain their address and configuration when moved between locations. The clean look and flexibility of the Altman Smart Track lighting system make it the ideal solution for many applications:

- Museums
- Houses of Worship
- Retail
- School Stages
- Art Galleries
- Lecture Halls
- Multipurpose Spaces
- Exhibits
- Small Scale Video Broadcast
- Restaurants

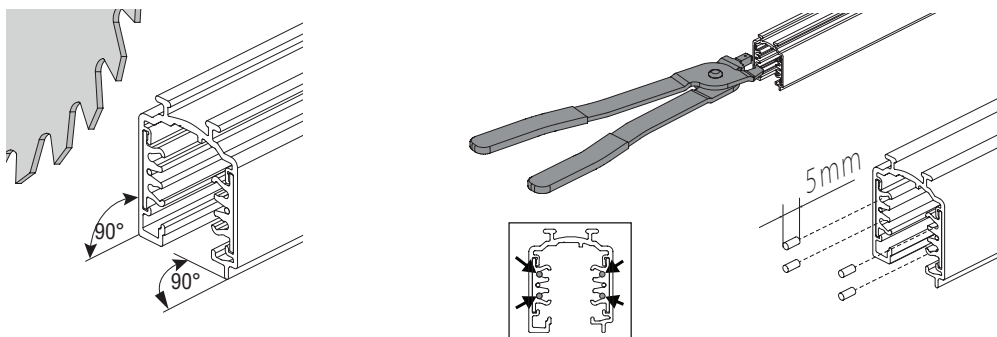
## ***Product Features:***

- Multiple mounting options including: surface, recessed, acoustic ceiling, and pendant
- Integral data distribution (DMX/RDM) that supports up to 32 DMX devices per data run and up to 20 DMX/RDM devices per data run
- Two-circuit track with separate neutrals for 120 Volt applications
- Three circuit track with single neutral for 230 Volt applications
- Can be cut to length on site
- Rugged design that can support up to 22 pounds per linear foot when properly supported
- Multiple track coupling options
- Multi-Adapters to support and supply power & data to Smart Track fixtures
- Complete line of accessories for design flexibility\*\*\*
- Available in black, white, and silver
- cULus listed and CE marked for indoor use
- Two-year warranty
- Lifetime product support

## Easy to Cut on Site

Any given profile can be easily cut to length on site.

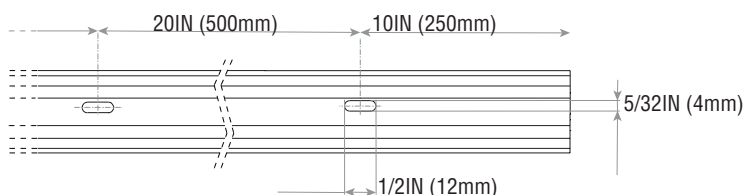
**Note:** If it is necessary to shorten the track during installation, after the cut it is necessary to use the special cutting tool (AST-S-9000/T) (to recess the 4 conductors (L1-L2-L3-N) at least of 5mm so that the correct air, surface and electrical distances are respected).



## Smart Track Mounting

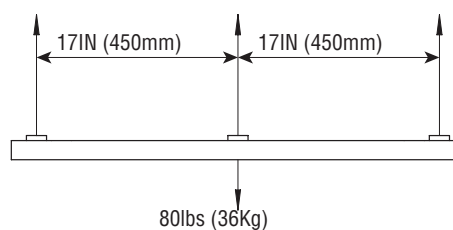
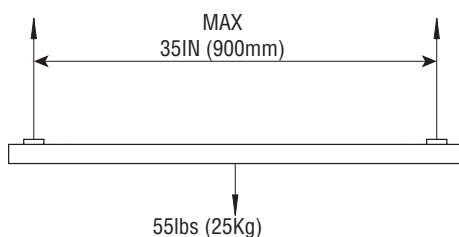
### Pre-Punch Mounting Holes

The track has pre-punched holes 5/32-inch (4mm) x 1/2-inch (12mm) for surface mounting. The holes are spaced 20-inches (500mm).



### Smart Track Load Distributions

The Altman Smart Track, should be mounted evenly. Below is recommended load distribution examples.



## DMX Signal Termination

DMX and especially DMX with RDM requires signal termination. The preferred method is to use a Live End with a terminator (120 ohm resistor) installed across the data terminals.

- **61-CF14JT120R** - Resistor 120 Ohm 5% 1/4 Watt
- **AST-9001-\* -2C** - Live End with Ground Contact Right
- OR
- **AST-9002-\* -2C** - Live End with Ground Contact Left

This Live end termination is the recommended option.

The second option is with the Smart Track Multi Adapter with terminator.- **AST-9219-2-\* -DMX-TERM**



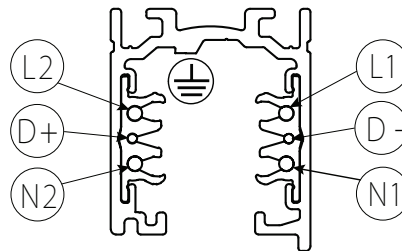
Live End with  
Terminator



Smart Track Adapter with  
Terminator

## Power Wiring

120 VAC Smart Track can be wired with two different circuits (two hots and two neutrals). The 120VAC power wiring is very straightforward. Two 20 Amp, 120 VAC circuit and they neutrals can reside on the same track. Fixture track heads are designed to select one or the other circuit by simply turning the fixture selection knob located on the track head.



## Specifications

<b>Materials:</b>	Extruded aluminum, steel busway.
<b>Power:</b>	20 Amps per circuit
<b>Voltage:</b>	120-277VAC*
<b>Environment:</b>	IP20
<b>Color:</b>	Black, White, Silver
<b>Compliance:</b>	cULus listed, CE marked
<b>Warranty:</b>	Two (2) years
<b>Support:</b>	Supported Forever - free phone and online tech support for the life of your product.

## Smart Track Compatible Fixtures

### Gallery Series

#### Product

- Gallery 15-35 degree Zoom Profile
- Gallery 25-50 degree Zoom Profile
- Gallery Beam Wash
- Gallery Flood
- Gallery Wall Wash

### Hydra Series

#### Product

- AIP-200 IP65 200Watt Par (Requires ST-STU-PDTP-PK)

### LED Worklight

#### Product

- LED Worklight II (Requires ST-STU-PTO)

### Pegasus

#### Product

- Pegasus 6-inch LED Fresnel (Requires ST-STU-PDTP)

### Spectra Series LED

#### Product

- Spectra Star Par
- Spectra Cube
- Spectra Cyc 50
- Spectra Cyc UV 50
- Spectra Cube UV

### Siren Series

#### Product

- AP150 RGBW Zoom Par (Requires ST-STU-PDTP)

# Smart Track Part Numbers

## Tracks

<b>AST-9000-UL4-ST2-*</b>	4' - 2-Circuit Smart Track™ - Standard
<b>AST-9000-UL8-ST2-*</b>	8' - 2-Circuit Smart Track™ - Standard
<b>AST-9000-UL12-ST2 *</b>	12' - 2-Circuit Smart Track™ - Standard
<b>AST-9000-UL4-RE2-*</b>	4' - 2-Circuit Smart Track™ - Recessed
<b>AST-9000-UL8-RE2-*</b>	8' - 2-Circuit Smart Track™ - Recessed
<b>AST-9000-UL12-RE2-*</b>	12' - 2-Circuit Smart Track™ - Recessed

230V and 277V Smart Track options are available. Contact Altman for more information.

## Couplers for Standard Track

<b>AST-9001-*</b>	Live End with Ground Contact Right
<b>AST-9002-*</b>	Live End with Ground Contact Left
<b>AST-9003-*</b>	Straight Coupler (with Data)
<b>AST-9004-*</b>	End Cap for Standard Track
<b>AST-9010-*</b>	I-Coupler (for Data and Power Input)
<b>AST-9011-*</b>	L-Coupler with Ground Contact Inside
<b>AST-9012-*</b>	L-Coupler with Ground Contact Outside
<b>AST-9013-*</b>	T-Coupler with Polarity Outside Left / Ground Inside Right
<b>AST-9014-*</b>	T-Coupler with Polarity Outside Right / Ground Inside Left
<b>AST-9015-*</b>	T-Coupler with Polarity Inside Left / Ground Outside Right
<b>AST-9016-*</b>	T-Coupler with Polarity Inside Right / Ground Outside Left
<b>AST-9017-*</b>	X-Coupler
<b>AST-9018-*</b>	Flexible Straight Coupler

## Couplers for Recessed Track

<b>AST-9001-RE2-*</b>	Live End with Ground Contact Right
<b>AST-9002-RE2-*</b>	Live End with Ground Contact Left
<b>AST-9004-RE2-*</b>	End Cap for Recessed Track
<b>AST-9010-RE2-*</b>	I-Coupler (for Data and Power Input)
<b>AST-9011-RE2-*</b>	L-Coupler with Ground Contact Inside
<b>AST-9012-RE2*</b>	L-Coupler with Ground Contact Outside
<b>AST-9013-RE2-*</b>	T-Coupler with Polarity Outside Left / Ground Internal Right
<b>AST-9014-RE2-*</b>	T-Coupler with Polarity Outside Right / Ground Internal Left
<b>AST-9015-RE2-*</b>	T-Coupler with Polarity Inside Left / Ground Outside Right
<b>AST-9016-RE2-*</b>	T-Coupler with Polarity Inside Right / Ground Outside Left
<b>AST-9017-RE2-*</b>	X-Coupler

## Current Limiting Devices

<b>AST-9001-CL-*</b>	Live End Feed with Circuit Limiting Feed, Polarity Right
<b>AST-9001-CL-S-*</b>	Live End Feed with Small Circuit Limiting Feed, Polarity Right
<b>AST-9002-CL-*</b>	Live End Feed with Circuit Limiting Feed, Polarity Left
<b>AST-9002-CL-S-*</b>	Live End Feed with Small Circuit Limiting Feed, Polarity Left
<b>AST-9010-CL-*</b>	Middle Feed with Circuit Limiting Feed

Notes: Circuit Breakers are Sold Separately

## Aircraft Mount Kits

<b>AST-9000-KIT1-**</b>	Suspension Kit with Screw Gripper + Steel Cable + Clamp with Auto Gripper
<b>AST-9000-KIT2-**-*</b>	Suspension Kit with Ceiling Clamp + Plastic Cup + Steel Cable with a Spherical End + Fast Fixing Clamp
<b>AST-9000-KIT3-**-*</b>	Suspension Kit with Screw Gripper + Plastic Cup + Steel Cable + Bracket with Automatic Gripper
<b>AST-9000-KIT4-**-*</b>	Suspension Kit with Round Head Ceiling Attachment + Steel Cable with a Spherical End + Clamp with Automatic Gripper
<b>AST-9000-KIT5-**-*</b>	Suspension Kit with Screw Gripper + Black Plastic Cup + Steel Cable with a Spherical End + Short Pendant Bracket for Suspensions
<b>AST-9000-KIT6-**-*</b>	Suspension Kit with Screw Gripper + Plastic Cup + Steel Cable + Short Pendant Bracket with Countersunk Hole for Suspensions with Automatic Gripper
<b>AST-9000-KIT8-**-*</b>	Suspension Kit with Round Head Ceiling Attachment + Steel Cable with a Spherical end + Short Pendant Bracket with Countersunk Hole for Suspensions with Automatic Gripper

## Pendant Mount Kits

<b>AST-S-9000-P1-UL-SF-***-*</b>	Suspension Set Crossbar + Metal cup + Mounting bracket+Stem**
<b>AST-S-9000-P2-UL-SF-***-*</b>	Suspension Set Crossbar + Flat Canopy + Mounting bracket + Stem**

## Ceiling Monopoint

<b>AST-9000-BPU-D-*</b>	Ceiling Monopoint with Databus
<b>AST-9000-BRU-D-*</b>	Recessed Mounting Adapter for Ceiling Monopoint (does not include Monopoint)

## Accessories

<b>AST-S-9000/T 61-DMXCAT</b>	Cutting Tool DMXcat for addressing fixtures via RDM (Required for DMX Model)
<b>61-CF14JT120R</b>	DMX Terminating Resistor 120 Ohm 1/4 Watt
<b>AST-9219-* -DMX-TERM</b>	Multi Adapter with DMX Terminator
<b>ST-STU-PDTP0</b>	AP-150 / Pegasus Track Mounting Kit with and Data/PowerCon and Fixture Mount
<b>ST-STU-PDTP0-PK</b>	AIP200 Track Mounting Kit with Seetronic Power and Data with Fixture Mount
<b>ST-STU-PTO</b>	AP-150 / Pegasus Track Mounting Kit with PowerCon and Fixture Mount (No Data)
<b>ST-STU-PTO-PK</b>	AIP200 Track Mounting Kit with Seetronic Power with Fixture Mount (No Data)

### Notes:

\* - Add one of the following codes for track finish: B-Black, W - White or S - Silver. Some items are only available in color noted in their description. For colors other than white, consult factory before ordering.

\*\* - Add one of the following codes for Steel Cable Length: 1.5 - 1.5meters, 3 - 3meters and 5 - 5meters. Diameter of the Aircraft wire is 1.5mm

\*\*\* - Add one of the following codes for Stem Length: 12 - 12inches, 24 - 24inches and 48 - 48inches