

AFS-700 LED Followspot



PEAK

BY ALTMAN

The AFS-700 LED Followspot is a lightweight, 780 Watt white LED manual control followspot that is packed with a powerful feature set at an affordable price. This compact luminaire weighs under 40 pounds (17 kg.) and is an application-built multi-performance LED Spot. The AFS-700 follows the traditions of Altman Lighting while introducing several new features to this performance followspot.

The AFS-700's compact, extruded aluminum design allows for discrete fixture placement while offering substantial light output up to 200 feet (60 meters). Equipped with a motorized precision zoom system with a focal range from 7-to-13 degrees, the AFS-700 can be controlled locally or remotely via DMX. The AFS-700 combines automated beam control with the hands-on power of a traditional followspot.



Bringing Imagination to Light™

Product Features

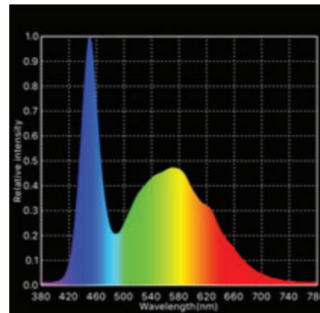
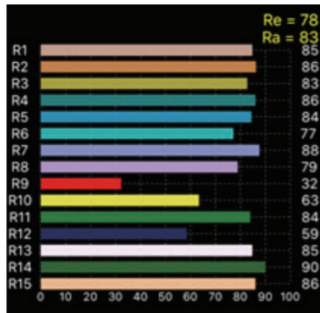
- 7600K white LED engine
- 7° to 13° motorized precision zoom system
- DMX or locally controlled: Intensity (dimming) Motorized focus and zoom Touch button color selection Half tone (split) color selection CTO Wheel with 5600K, 4500K and 3200K Iris Strobe LED on / off
- Discrete feature lock out system
- 100 to 240 VAC 50/60Hz operation with PowerCON input only
- Color Wheel with 7 colors + Split ; Red (Flame Red), Green (Moss Green), Magenta (Light Pink), Yellow (Soft Golden Amber), Blue (Booster Blue), Orange (Light Amber), Violet (Light Lavender).
- DMX 5-pin input and output/through
- Compatible with DMX 512 protocols (note, the AFS-700 is not an RDM-enabled luminaire)
- Local and multi-luminaire operation (no DMX needed)
- On-board, simple-to-use user control interface (control panel detachable)
- Includes folding light stand (polished aluminum finish)
- Luminaire comes in black finish
- Compact, lightweight design Fixture only: 38.3 lbs (17.4 kg) / Stand only: 12 lbs (5.5 kg)

AFS-700

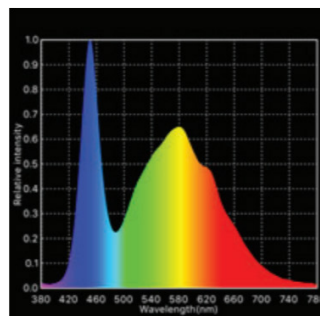
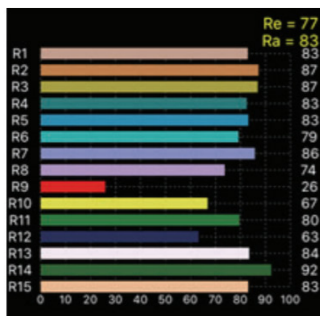
Photometrics



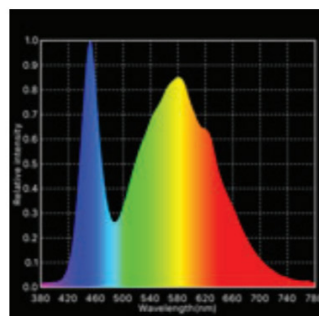
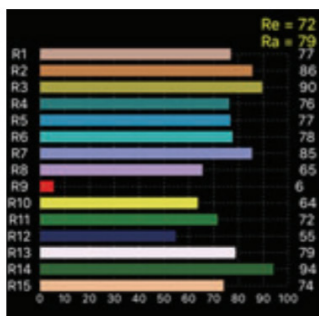
AFS-700 LED FOLLOW SPOT PHOTOMETRIC SCORE CARD - 7600K (native)	
CCT	7634K
DUV	-0.0091
CRI (Ra)	83
CQS	75
TLCI (Qa)	61.2
TM-30-15 rf	77
TM-30-15 rg	98



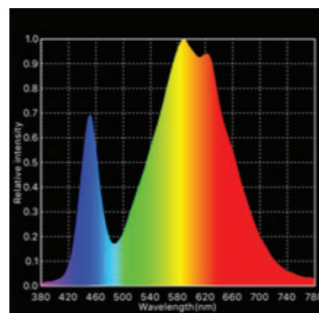
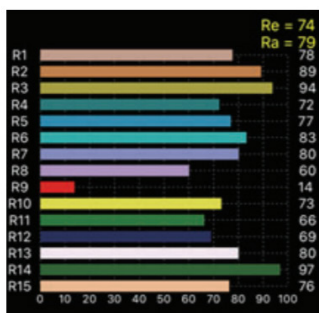
AFS-700 LED FOLLOW SPOT PHOTOMETRIC SCORE CARD - CTO WHEEL POSITION 1	
CCT	5455K
DUV	-0.0102
CRI (Ra)	83
CQS	75
TLCI (Qa)	59.8
TM-30-15 rf	77
TM-30-15 rg	98



AFS-700 LED FOLLOW SPOT PHOTOMETRIC SCORE CARD - CTO WHEEL POSITION 2	
CCT	4657K
DUV	-0.0039
CRI (Ra)	79
CQS	75
TLCI (Qa)	57.2
TM-30-15 rf	77
TM-30-15 rg	95



AFS-700 LED FOLLOW SPOT PHOTOMETRIC SCORE CARD - CTO WHEEL POSITION 3	
CCT	3055K
DUV	-0.0120
CRI (Ra)	79
CQS	74
TLCI (Qa)	54.4
TM-30-15 rf	74
TM-30-15 rg	99



AFS-700



Photometrics

AFS-700 LED Follow Spot at 7° (sharp focus)
Delivered beam lumens: 13,925

Throw Distance	50' (15.24m)	75' (22.86m)	100' (30.48m)	125' (38.1m)	150' (45.72m)	175' (53.34m)	200' (60.96m)
Field Diameter (feet)	6.0	9.17	12.23	15.29	18.35	21.41	24.47
Field Diameter (meters)	1.83	2.80	3.73	4.66	5.59	6.53	7.46
Illuminance (FC)	552.0	245.3	138.0	88.3	61.3	45.1	34.5
Illuminance (LUX)	5941.7	2640.7	1485.4	950.7	660.2	485.0	371.4

AFS-700 LED Follow Spot at 13° (sharp focus)
Delivered beam lumens: 10,099

Throw Distance	50' (15.24m)	75' (22.86m)	100' (30.48m)	125' (38.1m)	150' (45.72m)	175' (53.34m)	200' (60.96m)
Field Diameter (feet)	12.2	18.42	24.56	30.7	36.84	42.97	45.57
Field Diameter (meters)	3.71	5.61	7.49	9.36	11.23	13.10	13.89
Illuminance (FC)	122.9	54.6	30.7	19.7	13.7	10.0	7.7
Illuminance (LUX)	1322.9	587.9	330.7	211.7	147.0	108.0	82.7

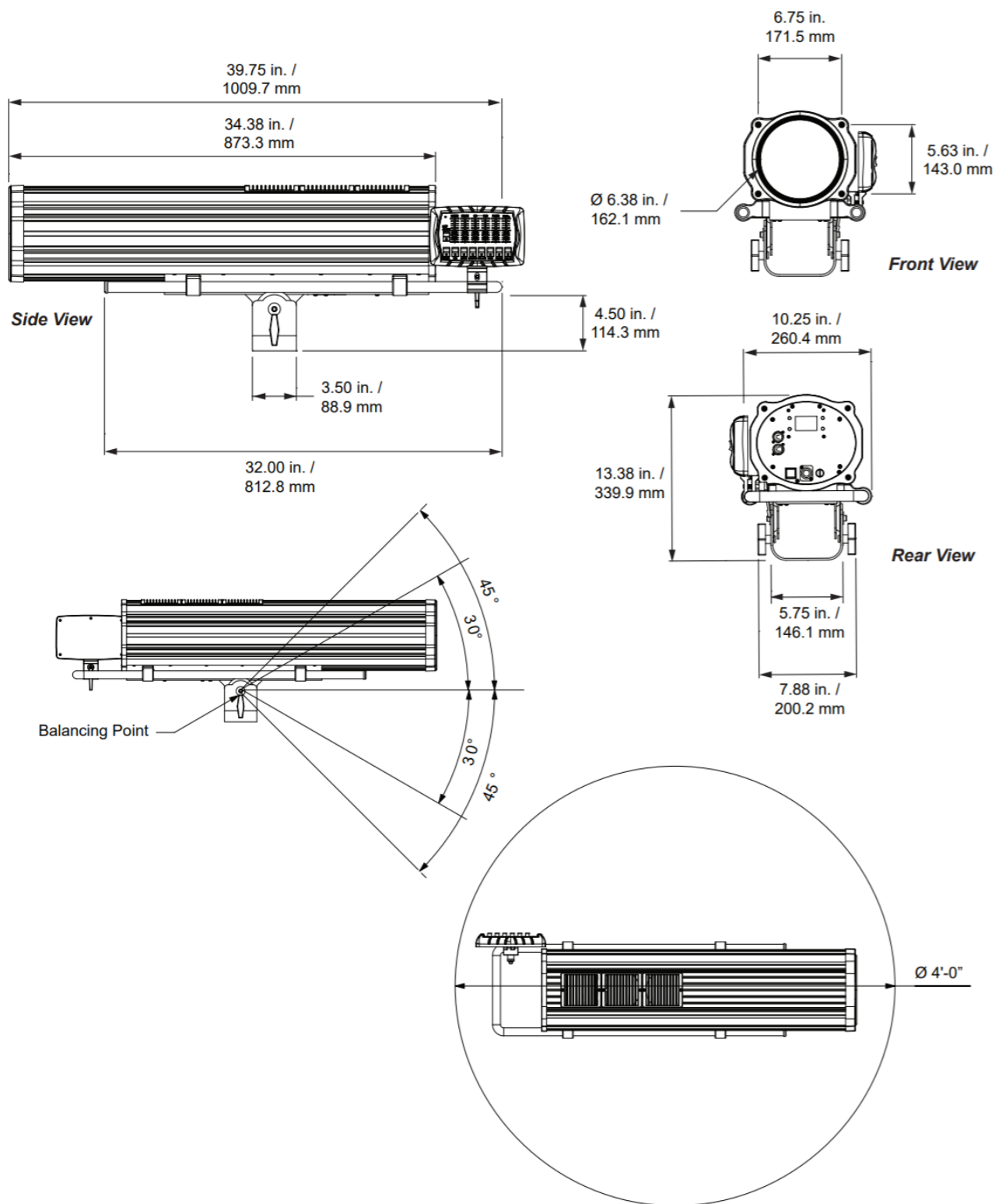
Note: Photometrics data on this page taken with 7600K native white LED output (no CTO or color).

AFS-700



Followspot Body Dimensions

IMPORTANT: Shipping Dimensions will be larger



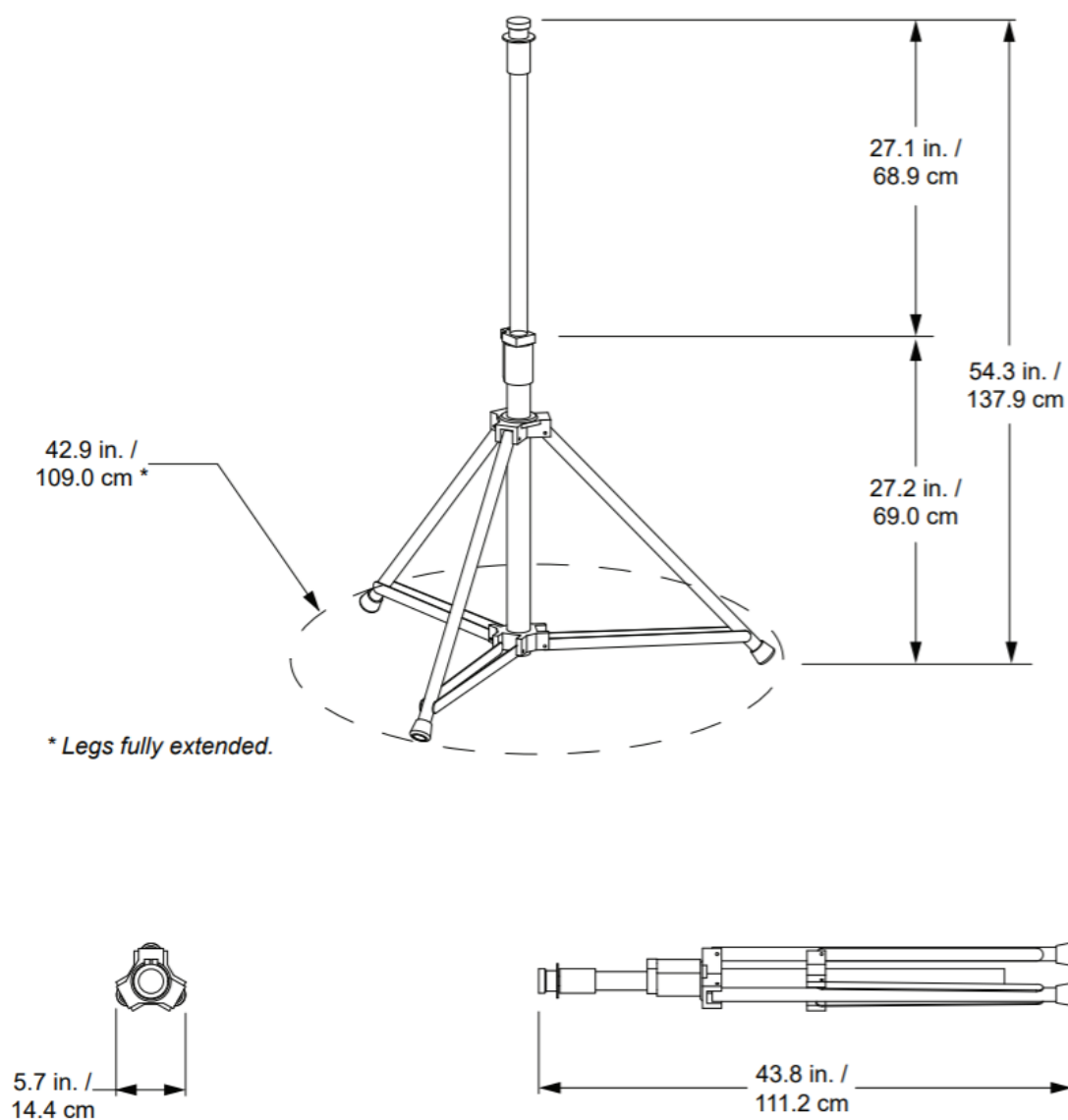
All drawings not to scale.

AFS-700



Light Stand Dimensions

IMPORTANT: Shipping Dimensions will be larger



AFS-700

Specifications

Housing:	Extruded and die-cast aluminum construction.
Materials:	Corrosion-resistant materials and hardware
Control:	DMX-512A network or local control via AFS-500 Control Panel (not RDM enabled)
Light Engine:	778 Watt Cool White Array (7600K)
Beam Lumens:	Refer to photometric performance pages
Beam Angle	7° to 13°
Rated LED Life:	LED arrays are rated for > 50,000 hours of operation
Input Voltage:	100 to 240 VAC, 50/60 Hz
Current Draw:	6.48 A at 120VAC / 3.38A at 230VAC
Fuse:	T5A, 250V
Quiescent Load:	Fans on, Lamp off - 0.51A at 120VAC (61.2 Watts)
Environment:	0 to 45 degrees C (32 to 113 degrees F) with humidity of 5%-95% (non-condensing)
Cooling:	Active Fan Cooling: 28dBa (in idle) fans will increase in conjunction with light output up to 37dBa
Weight:	Fixture only: 25.5 lbs (11.5 kg) Stand only: 12 lbs (5.5 kg)
Color:	Black
Compliance:	cETLus listed and CE marked for indoor use
Connectors:	Two 5-pin DMX connectors (one input, one output / through)



Ordering Information

AFS-700-B

Fixture with AFS-700 control panel and stand (AFS-TP). AC power input cable sold separately

AFS-700-B -PCED

Fixture with Control Panel, PowerCON (blue) to Edison Male, 25-foot (7.62 m) 20A power input cable

AFS-700-B -PCBE

Fixture with Control Panel, PowerCON (blue) to bare end, 25-foot (7.62 m) 20A power input cable

Available Accessories

AFS-ACCF	Altman Follow Spot Accessory Face Frame, 7.5 in. x 7.5 in. color filter front end accessory slot (fits AFS-700 or AFS-500 follow spots)
AFS-ECB	Altman Follow Spot Accessory, external color boomerang (up to 6 colors - requires AFS-ACCF)
AFS-TP	AFS Light Stand
AFS-700-CW3	3 Pound Counterweight for ECB

Call the Altman Factory for additional cable options.



303-500-7072 www.altmanlighting.com sales@altmanlighting.com