

# Ascent Performance Fresnel



## 6 Inch RGBACL LED Fresnel with Motorized Zoom

The Ascent Performance Fresnel is a 190-watt luminaire that utilizes high-output LED emitters, designed specifically for studio and theatre applications. It delivers luminance comparable to traditional 1KW and 2KW tungsten lamps.

This Fresnel offers a wide array of control options, including 8 Bit, 16 Bit, RGB, Studio, Gel Mode, and Single Channel Mode, providing users with versatile control capabilities. It includes factory-calibrated popular gel colors and allows for the programming and storage of custom color presets, enabling quick access to pre-loaded white points and frequently used entertainment colors.

Equipped with a motorized zoom, the Performance Fresnel provides a beam spread range from 15° to 75°, with built-in stops at five different set points for precise beam spread repeatability. The zoom can be adjusted either from the back panel, with a lock-out option, or directly from the console.



Bringing Imagination to Light™

### Product Features

- RGBACL Full Spectrum LED Engine
- 6 Inch Fresnel Lens Aperture with Smooth Wash
- Motorized Zoom System with Built-In Stops
  - Very Narrow
  - Narrow Spot
  - Medium Spot
  - Wide Flood
  - Extra Wide
- Patented Zoom Lock
- Local or Remote Control motorized zoom
- 50,000 LED hours of life expectancy
- All metal construction
- Color Temperature Range: 1800K - 10000K
- Green Magenta Adjustment
- Current: 1.58A at 120V
- 25bit Dimming
- Wattage: 190W
- IP20 Rated
- Active Cooling (19dBA- 40dBA)
- Color Calibration and Management System
- PowerCON TRUE1 TOP In / Thru Connection

Control Protocol: DMX/RDM, ArtNET, sACN  
Built in Color Filters  
Color Frame Slot with Locking Tab  
Color frame, and safety cable included  
13lbs (5.9kg). (Including safety cable and yoke)  
cETLus listed and CE marked (Pending)  
Five (5) year and one (1) day warranty

The Altman APF Family of Fresnels represents a dynamic new approach to Stage and Studio Lighting. With 6 channel color mixing, precise CCT tuning and motorized zoom optics, the APF is at home in any production and display environment. There's even an available motorized yoke!

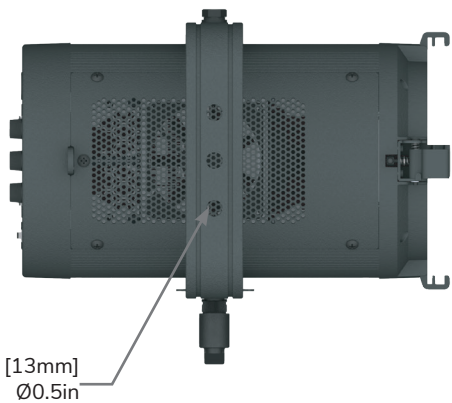


# Ascent Performance Fresnel

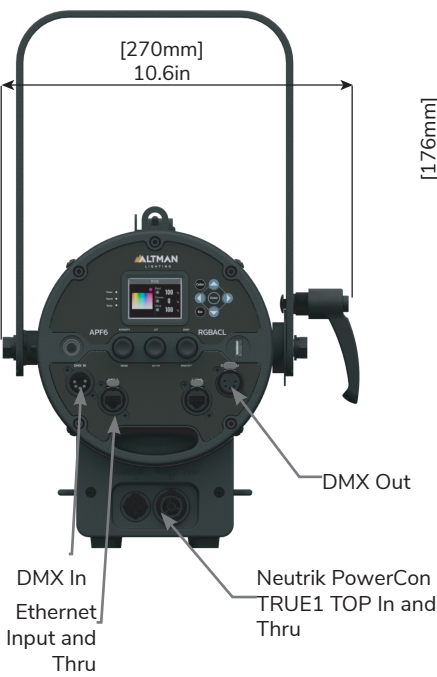


## Dimensions

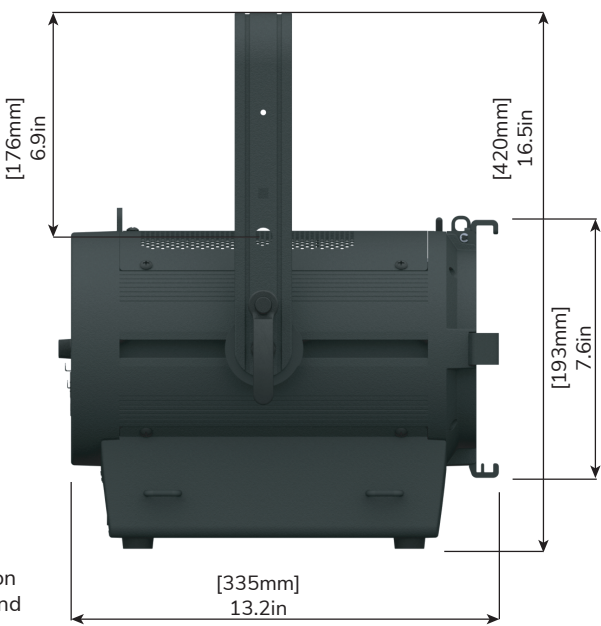
Top View



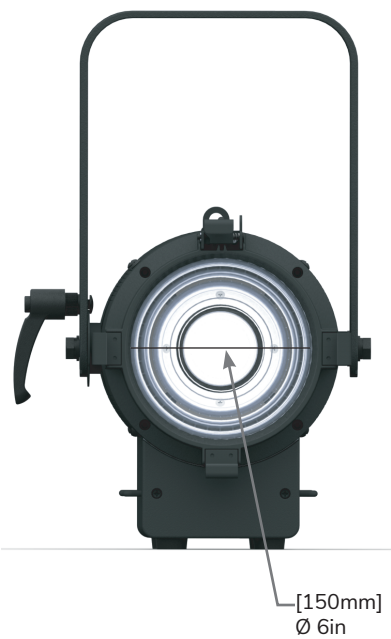
Rear View



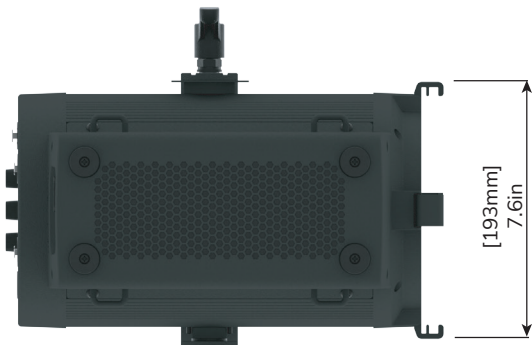
Side View



Front View



Bottom View



# Ascent Performance Fresnel



## Specifications

### LED Source

LED	RGBACL six colors
Max Power Consumption	190W Maximum
Rated LED Life:	Arrays are rated for >50,000 to L70

### Color

Color Used	RGBACL
Color Temperature Range	1800K to 10000K
Green Magenta Adjustment	Continuously adjustable (+/Green)
Dimming Precision	25bit
TLCI	>97
Color Rendition	96-98 for blackbody lines

### Optical

Zoom Range	Focusable Motorized
Aperture Size	6inch Fresnel 150mm, PCARC Lens
Beam Angle	15°-75°

### Control and Programming

Input Method	DMX/RDM, ArtNET , sACN
Protocols	DMX512/RDM
Modes	<ul style="list-style-type: none"><li>• 8bit/16bit MODE</li><li>• RGB Mode</li><li>• HSIC Mode</li><li>• Studio Mode</li><li>• Studio Color Mode</li><li>• GEL MODE</li><li>• XY Mode</li><li>• Single Channel Tungsten</li><li>• Single Channel Daylight</li></ul>
RDM Configuration	Yes
Local Control	On board controller
Software Upgrade	Fixture status, firmware upgrade through USB
User Interface	Yes

## Ordering Information

Model:	LED:	Body Color:
APF6 - Ascent Performance 6inch Fresnel	RGBACL - Coloring Changing	B - Black W - White C - Custom

### Included Items

Model:	Description:
APF6-RGBACL-* - Ascent Performance 6inch Fresnel	Color Frame (6-CF), 36-inch Black Safety Cable (SC-36-BK), 5-foot 20A True1 with Edison Connector (SPK-PBG-12-5)

### Electrical

Voltage Range	100-240VAC, 50/60Hz
Input Connection	Neutrik TRUE1 TOP In and Thru
Wattage	190W
Current Draw	1.58A @ 120VAC; 0.82A @ 230VAC
Number of Fixtures Per Circuit	10 (20A Power Thru Connector) 120V 19 (20A Power Thru Connector) 230V

### Thermal

Ambient Operating Temp	-20°-45° C (-4°-113° F)
Fan	Super silent fan cooling (4 modes with silent, auto, brightness, off)
dB	33dBA @1meter.

### Construction

Materials	Corrosion-resistant materials and hardware
Color Options	Black / White / Custom
Mounting	Yoke with 3 x Ø 0.5in Holrd
IP Rating	IP20
Weight:	13lbs (5.9kg)

### Warranty

Fixture	5 Years and 1 Day.
---------	--------------------

### Compliance

Compliance Marks	cETLus listed CE marked (Pending)
Country of Origin	Assembled in the USA

Note: When ordering the fixture simply select an option from each column and that will produce your ordering part number .

Color: Fixture ship standard as Black. If White or Custom are required that could result in a longer lead time.

Note: If a different power cable is needed, please Specify when placing your order.

# Ascent Performance Fresnel



## Available Accessories

Model:	Description:
510	Malleable Iron Clamp
515	Extruded Aluminum C-Clamp
6-SN	Snoot 7.5"x7.5"
6-BD-4-*	6" 4 Leaf Barn door
SC-36-BK	36-Inch Black Safety Cable with Spring Clip
SS-SC-40-BK	40-Inch Stainless Steel Safety Cable with Spring Clip
61-DMXCAT	DMXCAT DMX / RDM Setup Tool
DMX-5-TERM	XLR DMX Terminator
APF-PT	Pan / Tilt Kit (TBD)

## Power Input Cables

Model:	Connector Type:	Wire Size:	Length:
SPK - Neutrik True1	BARE - Bare End Cable 2P&G - Stage Pin Male PBG - Edison Male TLG - L5-20 Twist Lock Male GTL - L5-15 Twist Lock Male	12 - 12 Gauge	5 - 5ft 10 - 10ft 25 - 25ft

Note: When ordering the True1 Cable simply select an option from each column and that will produce your ordering part number.

## Power Jumper Cables

Model:	Wire Size:	Length:
SPKJ - Neutrik True1 Feed Thru Jumper Cable	12 -12 Gauge	5 - 5ft 10 - 10ft 20 - 20ft 25 - 25ft

Note: When ordering the True1 Feed Thru Jumper Cable simply select an option from each column and that will produce your ordering part number.

## DMX Cables

Model:	Number of Pins:	Length:
XLR - DMX Cable	5 - 5 pin DMX	5 - 5ft 10 - 10ft 15 - 15ft 25 - 25ft 50 - 50ft 100 - 100ft

Note: When ordering the XLR DMX Cable simply select an option from each column and that will produce your ordering part number.



303-500-7072 [www.altmanlighting.com](http://www.altmanlighting.com) [sales@altmanlighting.com](mailto:sales@altmanlighting.com)