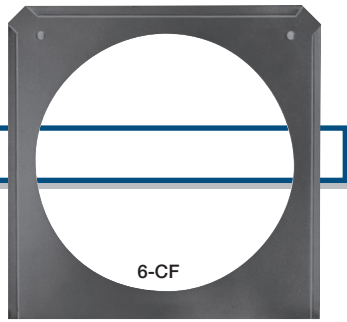


COLOR FRAMES

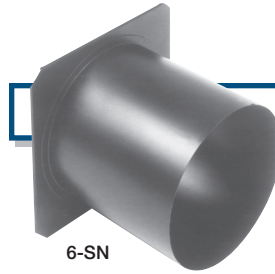
A metal or plastic frame used to add support to color media on a luminaire. Available for most Altman and other lighting fixtures.



| Catalog No. | Description & Applicable Fixture |
|-------------------|--|
| MCF | 3 3/8" x 3 3/8": MF, ME, MP, MAC |
| 100-CF | 3 3/4" x 3 3/4": 100 |
| 3.5Q-CF | 4 1/8" x 4 1/8": 3.5Q |
| 4.5-CF | 6 1/4" x 6 1/4": 4.5, S6-20 thru -50, PAR46, R3C |
| 6-CF | 7 1/2" x 7 1/2": 65Q, 165Q, 1KAF, 360Q, S6-12 S6-1535Z, S6-3055Z, PAR38, PAR56 |
| 8-CF | 10" x 10": 75Q, 175Q, PAR64, Outdoor-Par Series |
| TEN-CF | 12" x 12": S6-10 |
| TWE-CF | 14" x 14": S6-5 |
| 153-CF | 10 1/2" x 10 1/2": 153 |
| 154/160-CF | 15 3/4" x 16": 154, 160 |
| 155-CF | 19" Diameter, 2 Piece Black: 155 |
| 161-CF | 16" Diameter, 2 Piece Black: 161 |
| R40-CF | 5 3/4" x 6 3/4": R40 |
| R40-COMBO | 5 3/4" x 6 3/4", 2 Piece: R40 |
| 56B-CF | 7 3/4" x 8": PAR56-B |
| 56B-COMBO | 7 3/4" x 8", 2 Piece: PAR56-B |
| 64B-CF | 8 3/4" x 9 1/2": PAR64-B |
| 64B-COMBO | 8 3/4" x 9 1/2", 2 Piece: PAR64-B |
| ZS-CF | 4 3/4" x 4 3/8": Zip Strip (one frame per 2 lamps) |
| JS-CF | 4 11/16" x 3 5/16": Jazz Strip (one frame per 2 lamps) |
| MICS-CF | 2 5/8" x 20": Micro Strip (one frame per 10 lamps) |
| GC-CF | 8 3/4" x 13", 2 Piece Black: Ground Cyc |
| FC-CF | 11 1/2" x 10 1/4" Black: Focusing Cyc, EconoCyc |
| SC-CF | 15 1/2" x 15 7/8", 2 Piece Black: SKY-CYC Series |
| SL-JR-CF | 8 3/4" x 8 3/4", 2 Piece Black: SOFT-LITE-JR |
| SL-CF | 8 3/4" x 19", 2 Piece Black: SOFT-LITE |
| QL-CF | 4 1/4" x 6 x 3 1/2" deep, 3 Piece Black: Q-LITE-JR, Q-LITE |
| F3-FF | 5" Diameter, Hinged Black: 300L |
| F4-FF | 6 5/8" Diameter, Hinged Black: 650L |
| F5-FF | 7 3/4" Diameter, Hinged Black: 1000L, 575SE |
| F7-FF | 9" Diameter, Hinged Black: 1000S, 2000L, 1200SE |
| F10-FF | 13" Diameter, Hinged Black: 2000S, 5000L, 2500SE, UV-703 |
| F12-FF | 15 1/2" Diameter, Hinged Black: 5000S, 4000SE |

Specifications subject to change without notice

SNOOTS



Snoots, or top hats, are devices to reduce light spill. This accessory is available for most Altman lighting fixtures.

| Catalog No. | Description & Applicable Fixture |
|---------------------|--|
| 100-SN | 3 3/4" x 3 3/4": 100 |
| 3.5Q-SN | 4 1/8" x 4 1/8": 3.5Q |
| 4.5-SN | 6 1/4" x 6 1/4": 4.5Q, PAR46, S6-20 thru -50 |
| 6-SN | 7 1/2" x 7 1/2": 65Q, 165Q, 1KAF, 360Q, PAR38, PAR56, S6-12, S6-1535Z, S6-3055Z |
| 8-SN | 10" x 10": 75Q, 175Q, PAR64 |
| TEN-SN | 12" x 12": S6-10 |
| OD-P64-SN | 6 3/4" Combination Snoot/Color Frame Holder, Black (8-CF included): Outdoor-Par Series |
| ODC-SN-SHORT | 1 1/2" Short Nose Combination Snoot/Color Frame Holder, Black: Outdoor-Par Series |
| F3-SN | 2 in 1 Set: 300L |
| F4-SN | 2 in 1 Set: 650L |
| F5-SN | 2 in 1 Set: 1000L, 575SE |
| F7-SN | 3 in 1 Set: 1000S, 2000L, 1200SE |
| F10-SN | 3 in 1 Set: 2000S, 5000L, 2500SE, UV-703 |
| F12-SN | 3 in 1 Set: 5000S, 4000SE |

PATTERN HOLDERS

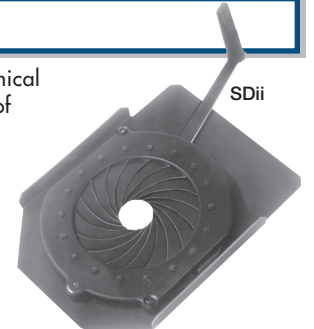
Supports for positioning patterns, or templates, in the optical center of ellipsoidal spotlights. A steel channel pattern holder is available for most ellipsoidals. An aluminum holder with three tabs or sandwich style is also available.



| Catalog No. | Description & Applicable Fixture |
|----------------|--|
| MAPH | 1 1/4" Diameter Image Area For Metal or Glass Gobos: MAC, ME |
| 3.5Q-PH | 2" Diameter Image Area: 3.5Q |
| 360-PH | 2 3/4" Diameter Image Area: 360Q, S6 Series, 4.5 |
| 1KL6-PH | 2 3/4" Diameter Image Area: S6 Series |

DROP-IN-IRIS

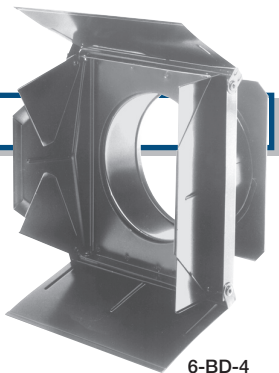
A plate that contains an iris, (a mechanical means of varying the diameter of a beam of light), which can easily be inserted or removed from an ellipsoidal spotlight.



| Catalog No. | Description & Applicable Fixture |
|--------------|----------------------------------|
| SDii | Drop-in 3" Iris: S6 Series |
| S4Dii | Drop-in 3" Iris: ETC™ S4-Series |

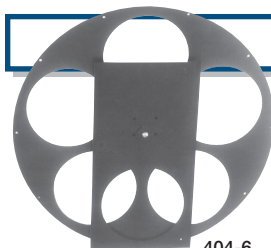
BARNDOORS

An apparatus with adjustable flaps, or "barn doors" that are used to control light spill in a controlled manner. This item is available for most Altman luminaires.



Catalog No. Description & Applicable Fixture

| | |
|------------------|---------------------------------------|
| MBD | 4 Leaf: MF, MP |
| 100-BD | 2 Leaf: 100 |
| 6-BD-4 | 4 Leaf: 65Q, 165Q, 1KAF, PAR38, PAR56 |
| 8-BD-4 | 4 Leaf: 75Q, 175Q, PAR64, PAR64-AL, |
| QL-JR-BD4 | 4 Leaf: Q-LITE-JR |
| QL-BD4 | 4 Leaf: Q-LITE |
| F3-BD4 | 4 Leaf: 300L |
| F4-BD4 | 4 Leaf: 650L |
| F5-BD4 | 4 Leaf: 1000L, 575SE |
| F5-BD8 | 8 Leaf: 1000L, 575SE |
| F7-BD4 | 4 Leaf: 1000S, 2000L, 1200SE |
| F7-BD8 | 8 Leaf: 1000S, 2000L, 1200SE |
| F10-BD4 | 4 Leaf: 2000S, 5000L, 2500SE, UV-703 |
| F10-BD8 | 8 Leaf: 2000S, 5000L, 2500SE, UV-703 |
| F12-BD4 | 4 Leaf: 5000S, 4000SE |
| F12-BD8 | 8 Leaf: 5000S, 4000SE |



COLOR WHEELS

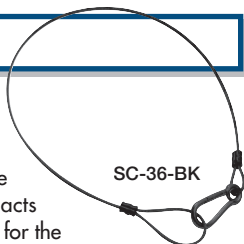
A wheel-like device to which 5 colors of gel can be attached. These wheels are rotated by a motor in such a manner that any one specific color gel can be placed in front of a luminaire with relative ease.

Catalog No. Description & Applicable Fixture

| | |
|----------------|--|
| 404-4.5 | Motorized: 4.5 Series, S6-20 thru -50, Par 46 |
| 404-6 | Motorized: 65Q, 165Q 1KAF, 360Q, S6-12, S6-1535Z, S6-3055Z, PAR38, PAR56 |
| 404-8 | Motorized: 75Q, 175Q, PAR64 |

SAFETY CABLE

A steel cable that has a clip on one end and a loop on the other. It is intended to be threaded around a piece of hanging equipment and around a support structure, such as a pipe batten, and then clipped to its loop. It then acts as a safety support should the primary support for the equipment fail.

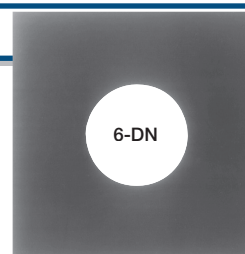


Catalog No. Description & Applicable Fixture

| | |
|-----------------|---|
| SC-36-BK | 36" Safety Cable with Spring Clip: For All Fixtures |
|-----------------|---|

DONUTS

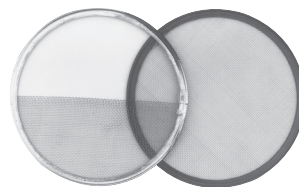
A metal plate used to increase the clarity of patterns in an ellipsoidal spotlight by reducing halation and sharpening the image. Available for most Altman ellipsoidal spotlights.



Catalog No. Description & Applicable Fixture

| | |
|----------------|---|
| 3.5Q-DN | 4 1/8" x 4 1/8" w/ 1 1/4" Hole: 3.5Q |
| 4.5-DN | 6 1/4" x 6 1/4" w/ 2 1/2" Hole: 4.5Q, S6-20 thru -50 |
| 6-DN | 7 1/2" x 7 1/8" w/ 3" Hole: 360Q, S6-12, S6-1535, S6-3033Z, |
| 8-DN | 10" x 10" w/ 4" Hole |

SCRIMS



A round, framed metal screen, available in various densities, that acts as a dimmer when placed in front of a luminaire. They are also available so that only half of the frame is screened, allowing for only a portion of the light to be dimmed.

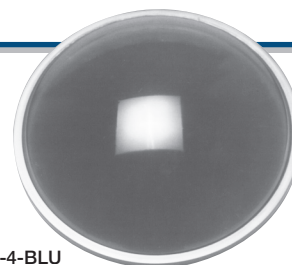
Catalog No. Description & Applicable Fixture

| | |
|--------------|--|
| F3-* | 5" Diameter: 300L |
| F4-* | 6 5/8" Diameter: 650L |
| F5-* | 7 3/4" Diameter: 1000L, 575SE |
| F7-* | 9" Diameter: 1000S, 2000L, 1200SE |
| F10-* | 13" Diameter: 2000S, 5000L, 2500SE, UV-703 |
| F12-* | 15 1/2" Diameter: 5000S, 4000SE |

* To order scrims, substitute the following:
FS = Full Single Density, **HS** = Half Single Density,
FD = Full Double Density, **HD** = Half Double Density, or
SC-SET = one each of the four density types.

ROUNDLS

Heat resistant colored glass roundels are used in border, cyc and footlights to provide permanent color washes. Roundels are also stocked as spread beam (50°) for smooth textured lighting effects.



Catalog No. Description & Applicable Fixture

| | |
|--------------------|---|
| RNDL-4-* | 4" Smooth Roundel: DF-400, 520 |
| RNDL-5-* | 5 5/8" Smooth Roundel: DF-558, 528, R40 |
| RNDL-5-50-* | 5 5/8" 50° Smooth Roundel: DF-558, 528, R40 |
| RNDL-7-* | 7 7/16" Smooth Roundel: 537, PAR56-B, PAR64-B |
| RNDL-7-50-* | 7 7/16" 50° Smooth Roundel: 537, PAR56-B, PAR64-B |
| 18-0110 | 8" Very Narrow Spot Lens: SP Series, Outdoor-Par Series |
| 18-0111 | 8" Narrow Spot Spread Lens: SP Series, Outdoor-Par Series |
| 18-0112 | 8" Medium Flood Spread Lens: SP Series, Outdoor-Par Series |
| 18-0113 | 8" Wide Flood Spread Lens: SP Series, Outdoor-Par Series |
| 18-0114 | 8" Very Wide Flood Spread Lens: SP Series, Outdoor-Par Series |

* To order roundels, substitute the following:
AMB = amber, **BLU** = blue, **CLR** = clear, **GRN** = green, **RED** = red

Specifications subject to change without notice