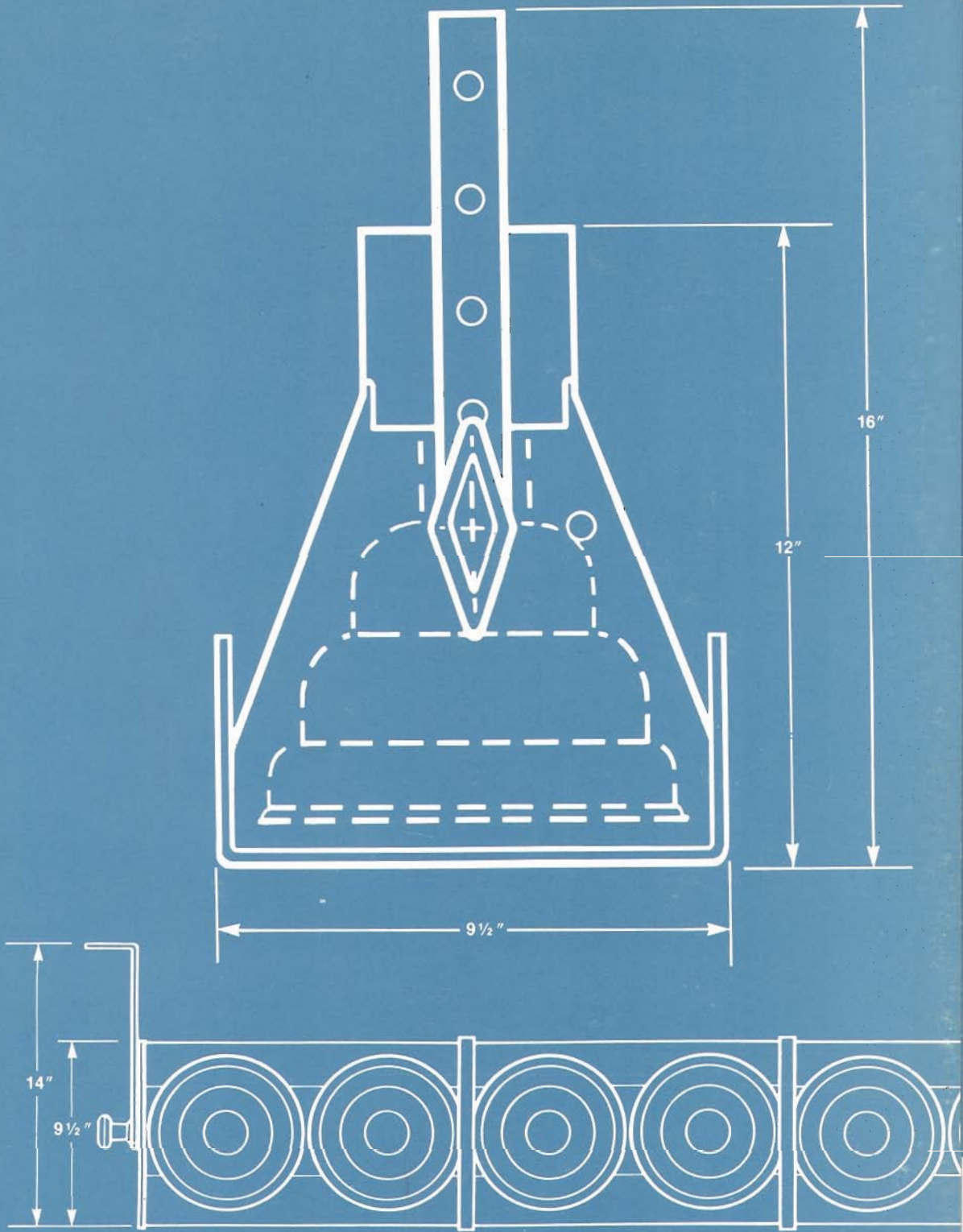


ALTMAN



Borderlights

THE QUALITY OF LIGHT
Altman Stage Lighting Company, Inc., 57 Alexander Street, Yonkers, NY 10701 • 914-475-7987 or 212-569-7777, FAX: 914-963-7304

This catalog supplement has been created to allow the lighting designer to compare and specify borderlights in an easy to understand manner. Altman Stage Lighting Co., Inc. has been servicing our industry for over forty years with a tradition of designing and manufacturing quality stage lighting equipment and we will continue into the future.

All products listed in this supplement as "standard length" are stock items and are available for immediate shipment. Full specifications on all products are available from Altman Stage Lighting or any authorized Altman dealer. With the exception of the disappearing footlights, all the products listed in this brochure are U.L. listed.



General Downlight Units

The incandescent #520, #528 and #537 borderlights as well as the Tungsten-Halogen #600 striplight are all primarily designed for color washes or light enhancement from directly overhead.

With its low wattage and wide angle of light dispersion, the #520 is most used for displays or cabaret-type theatres where low ceiling heights precludes the unit from being more than four feet above a performer's head. The #528 may be used effectively as high as thirteen feet above the stage floor. Higher wattage and a narrower field of light allow the #537 to be flown two to three feet above the #528, while the #600 with its capability of being lamped to 500 watts permits heights more than twenty feet above the stage floor.

All four of these borderlights are manufactured in standard lengths (specified below) and the three incandescent units can be custom built as continuous striplights. The continuous length borderlight is factory wired in a manner that will not allow for circuitry of more than twenty amperes with the suggested lamps.

STANDARD LENGTH UNITS

Cat No: 520	5' - 7 1/2"	3 circuit	15 lamps
	6'	4 circuit	16 lamps
	9'	3 or 4 circuit	24 lamps
528	6'	3 or 4 circuit	12 lamps
	7' - 6"	3 circuit	15 lamps
	8'	4 circuit	16 lamps
537	5' - 4"	4 circuit	8 lamps
	6'	3 circuit	9 lamps
	8'	3 or 4 circuit	12 lamps
600	5' - 4"	4 circuit	8 lamps
	6'	3 circuit	9 lamps
	8'	3 or 4 circuit	12 lamps

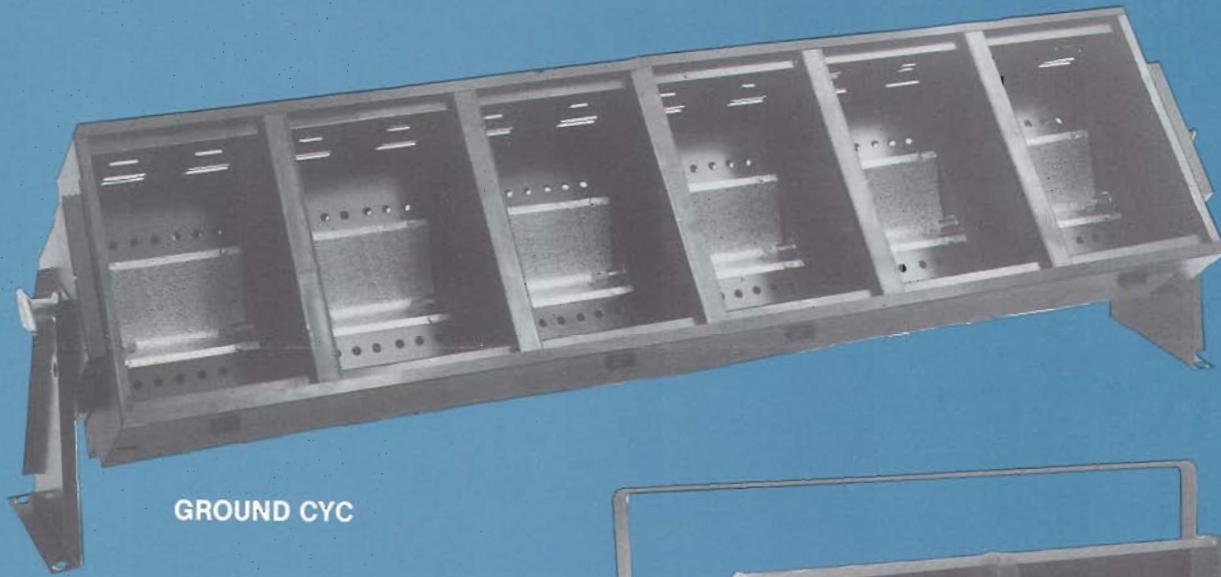
ACCESSORIES SUPPLIED WITH THE STANDARD LENGTH FOUR BORDERLIGHTS:

- 508 Hanging Arm and Clamp (1 pair)
- Correct Diameter Roundels (2)
- Correct Diameter Retaining Ring.

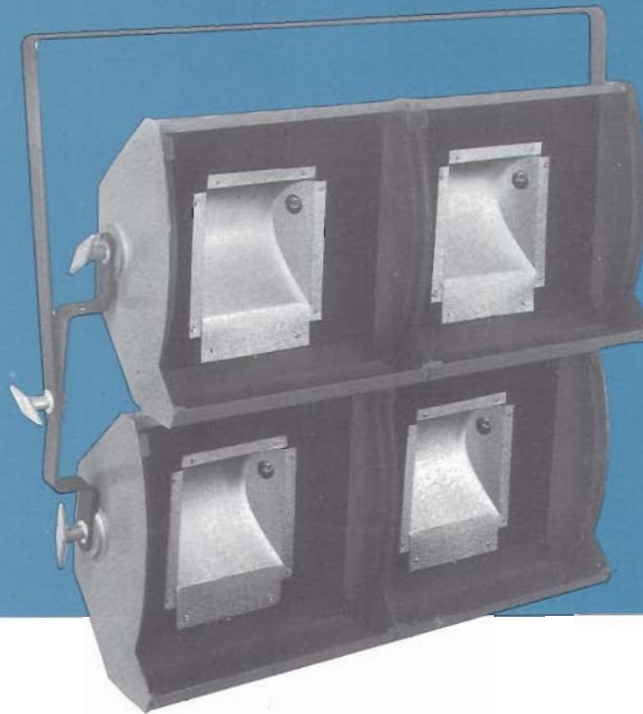
1. Continuous length units are supplied with chain hangers.
2. Roundel Colors - Clear, Red, Blue, Amber, Green.

ALTMAN

THE QUALITY OF LIGHT



GROUND CYC



SKY CYC

CYCLORAMA LIGHTING

The advent of the asymmetrical reflector made it possible to smoothly light large areas. Both the Sky Cyc and the Ground Cyc take advantage of these reflectors.

The Sky Cyc was originally intended to be flown between 6 and 8 feet downstage of the cyclorama and would provide the desired coverage when the units were hung 10 to 12 feet on center. In theatres, where this spacing is not feasible, more lights may be used at decreased spacing. Sky Cyps are normally constructed as 1, 2, or 3 lamp horizontal units or 2 lamp vertical units or as 4 lamp horizontal/vertical (2 over 2) units.

The Ground Cyc is normally a multi-lamp luminaire (although single lamp units are manufactured) designed to produce an even distribution of light from the ground row position. Wired in 2, 3, or 4 circuit configurations, the Ground Cyc lends itself to even color washes on the cyclorama, and when used in conjunction with overhead cyc lighting allows the designer multiple upstage "Looks".

Cat No: SKY CYC
Lamps - (1000 watt) FFT (1500 watt) FDB

ACCESSORIES - SUPPLIED WITH LUMINAIRE

510 Malleable iron pipe clamp
SC Safety cable with spring clip

OPTIONAL ACCESSORIES

SC CF Spring steel color frame

Cat No: GROUND CYC

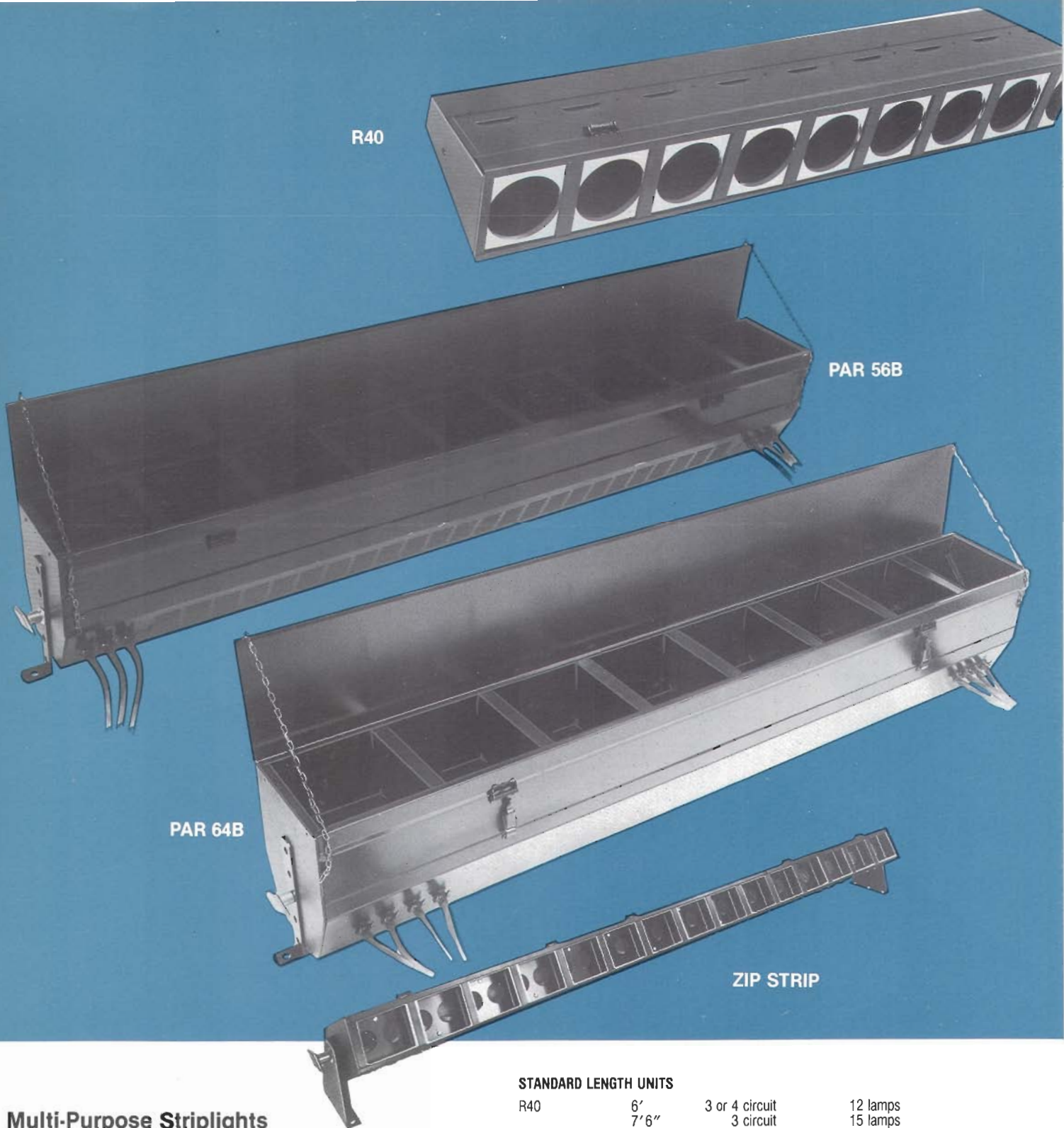
Lamps (300 watt) EHM (500 watt) FCL (750 watt) EJG
(1000 watt) FCM

ACCESSORIES - SUPPLIED WITH LUMINAIRE

FT Floor Trunion
GC CF Spring Steel Color Frame

Borderlights are usually multi-circuited, multi-compartmented luminaires designed for specific uses.

The applications include general down-light washes, down and/or up lighting of cycloramas, or as footlights or worklights.



Multi-Purpose Striplights

The lighting units described below are truly multi-purpose. They all produce beam patterns that are dependent on the lamp used and not a product of an integral reflector. In this way these lighting devices may be lamped to be used for cyclorama lighting, general down lighting, and in some instances, when stood on end, as side lighting for effect.

The R40 borderlight may be the most effective luminaire in small theatres or presentation spaces. With a large number of lamps from which to choose, this unit can be used for almost any form of general light. Also, by using different lamps in the same unit, it can be an effective cyclorama lighting device.

For larger theatres: larger lights. The Par56B striplight may be flown as high as 30 feet and still produce substantial light on stage. The Par64B may be trimmed 50 feet above stage effectively. Due to the oval nature of the bulb beam patterns, these two multi-circuited units have an inherent versatility that allows the designer to flood the stage for color washes and toning, or to use narrower, more controlled beam projections for highlighting or cyclorama lighting.

The Zip Strip uses a wide range of 12 volt MR-16 lamps wired in series to create 120 VAC circuits. As in the case of the R-40 Borderlight, the beam patterns are circular with different field angles depending on the lamp selected. By utilizing different diameter lamps in one striplight, designers can achieve desired effects and/or create electric loads to match existing dimmer requirements.

Another advantage of the Zip Strip is it's physical size. Approximately 5 inches wide and 9 inches high, the Zip Strip is easy to mask behind ground rows or scenic pieces.

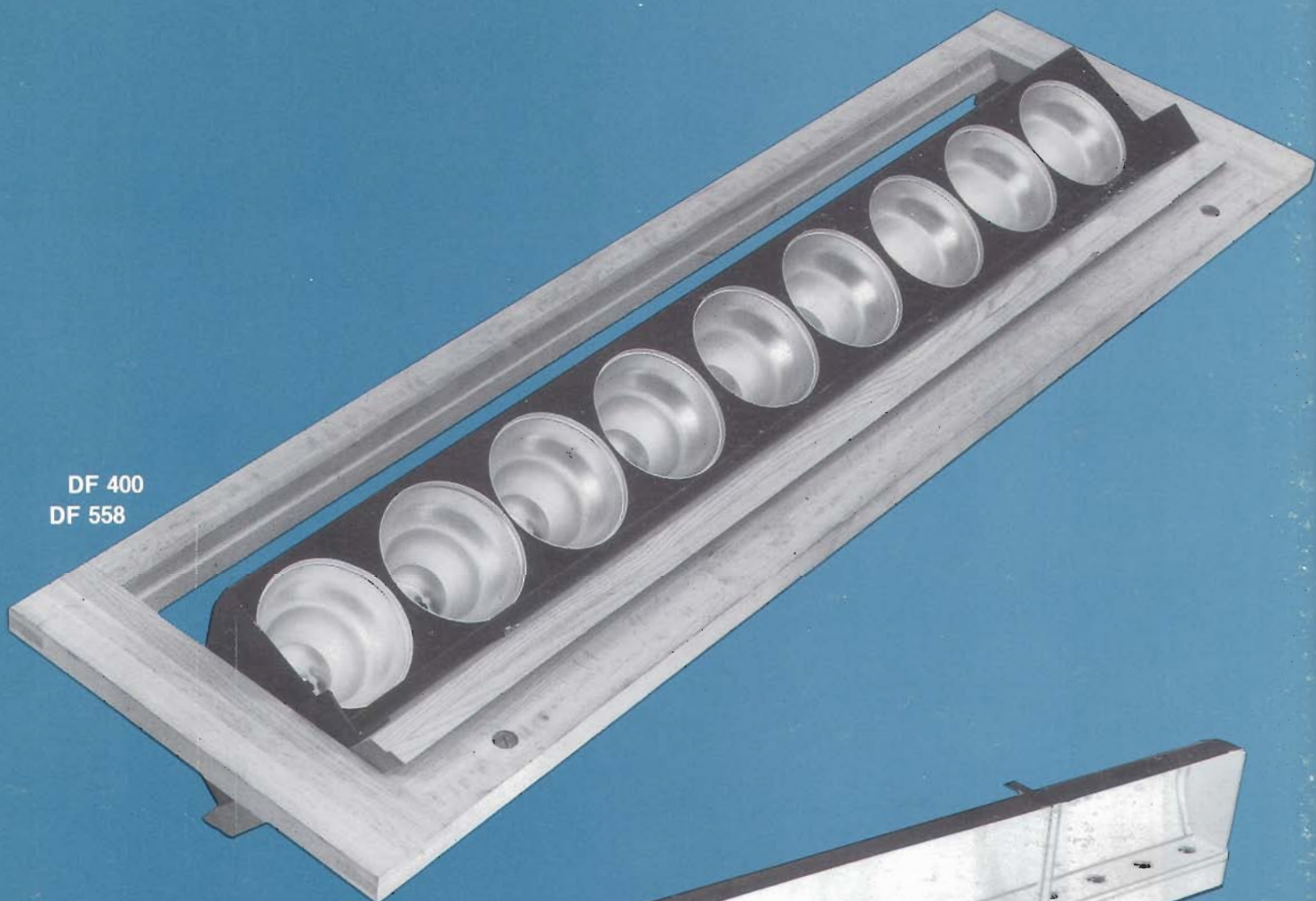
STANDARD LENGTH UNITS

R40	6'	3 or 4 circuit	12 lamps
	7'6"	3 circuit	15 lamps
	8'	4 circuit	16 lamps
Par56B	4'	3 circuit	6 lamps
	5'4"	2 or 4 circuit	8 lamps
	6'9"	3 circuit	9 lamps
	8'	3 or 4 circuit	12 lamps
Par64B	4'6"	3 circuit	6 lamps
	6'	4 circuit	8 lamps
	6'9"	6 circuit	9 lamps
	9'	6 or 8 circuit	12 lamps
	Zip Strip	2'2"	1 circuit
	4'4"	2 circuit	20 lamps
	6'6"	3 circuit	30 lamps
	8'8"	4 circuit	40 lamps

ACCESSORIES - SUPPLIED WITH ALL STANDARD LENGTH BORDERLIGHTS

#508 Hanging Arm and Clamp (1 pair)
Color Frames (2)

1. The continuous length R40 borderlight is supplied with chain hangers.
2. All of the above units are designed to be used with "plastic" color media. Optional color frames are available for use with roundels, and in the case of the Zip Strip, Dichroic filters.



DF 400
DF 558



SE

Disappearing Footlights

As the name implies these striplighting devices are constructed to mate with the stage floor when not in use. The lighting unit is manufactured within a hardwood frame which is set flush with the stage floor by contractors. Latches are provided to lock the striplight in either the open or closed position. Also integral to the unit is a switch which will not permit operation of the light in the closed position. The luminaire is ideal for lighting downstage action and for non theatrical events.

Two different models of disappearing footlights are manufactured: the DF400 and the DF558. The DF400 has 12 lamp sockets on 4 1/2 inch centers, can be wired for either 3 or 4 circuit applications, and may use a suggested maximum lamp of 100 watts. The DF558 has 9 lamp sockets on 6 inch centers, is wired for 3 circuits and may use a suggested 200 watt maximum lamp.

ACCESSORIES SUPPLIED WITH LUMINAIRE

DF400

4" reflectors for A19 style lamps

4" diameter roundels*

4" retainer rings

DF558

5-5/8" reflectors for A23 style lamps

5-5/8" diameter roundels*

5-5/8" retainer rings

*Roundel Colors - Clear, Red, Blue, Amber, Green

SE Borderlight

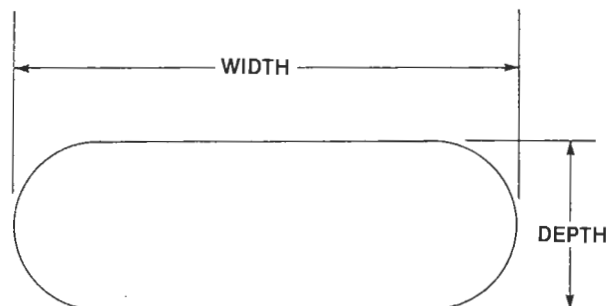
The SE borderlight is generally used in theatres as a worklight for pinrails, counterweight loading catwalks and dimmer rack locations. Constructed with medium screw sockets to accept "A" type lamps, this unit may be circuited to custom specifications. As an overstage lighting device it is usually wired for three or four circuits. When used as a worklight, it is customary to wire for two circuits, one circuit for low wattage colored lamps to be used during performances to avoid light spill on stage, yet just bright enough to aid offstage personnel. The other circuit is usually lamped with 40 to 60 watt lamps for bright light during set-up and strike.

ALTMAN

Borderlight Beam Spread Data

APPROXIMATE PATTERN OF LIGHT ON STAGE FLOOR WHEN AN 8 FOOT STRIPLIGHT IS FLOWN 15 FEET ABOVE STAGE FLOOR.

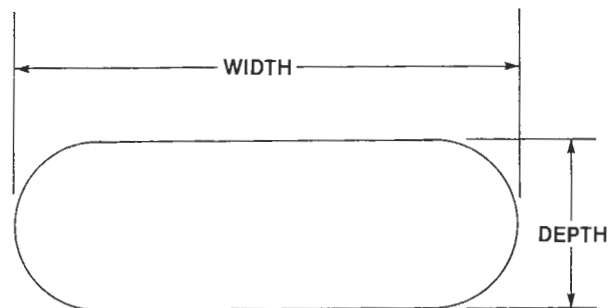
	DEPTH	WIDTH
R40-150 PAR/FL	17' 4"	25' 4"
R40-150 PAR/SP	7' 6"	15' 6"
520	23'	31'
528	25'	33'
537	19'	27'
600	13' 5"	21' 5"



APPROXIMATE PATTERN OF LIGHT ON STAGE FLOOR WHEN AN 8 FOOT STRIPLIGHT IS FLOWN 25 FEET ABOVE STAGE FLOOR.

ZIP STRIP	DEPTH	WIDTH
With ETF Lamp	13' 4"	21'
With EYJ Lamp	18' 3"	26'
With EYC Lamp	23' 6"	31' 6"

PAR 56B	DEPTH	WIDTH
With 500 Narrow Spot Lamp		
Orientated Parallel with CYC	6' 6"	22' 4"
Orientated Perpendicular with CYC	14' 4"	14' 6"
With 500 Medium Flood Lamp		
Orientated Parallel with CYC	8' 9"	27'
Orientated Perpendicular with CYC	19'	16' 9"
With 500 Wide Flood Lamp		
Orientated Parallel with CYC	15'	40' 6"
Orientated Perpendicular with CYC	32'	23'



PAR 64B	DEPTH	WIDTH
With FFP Lamp		
Orientated Parallel with CYC	6' 2"	19' 6"
Orientated Perpendicular with CYC	11' 6"	14' 2"
With FFR Lamp		
Orientated Parallel with CYC	9' 3"	28'
Orientated Perpendicular with CYC	20'	17' 3"
With FFS Lamp		
Orientated Parallel with CYC	20'	43' 8"
Orientated Perpendicular with CYC	35' 8"	28'