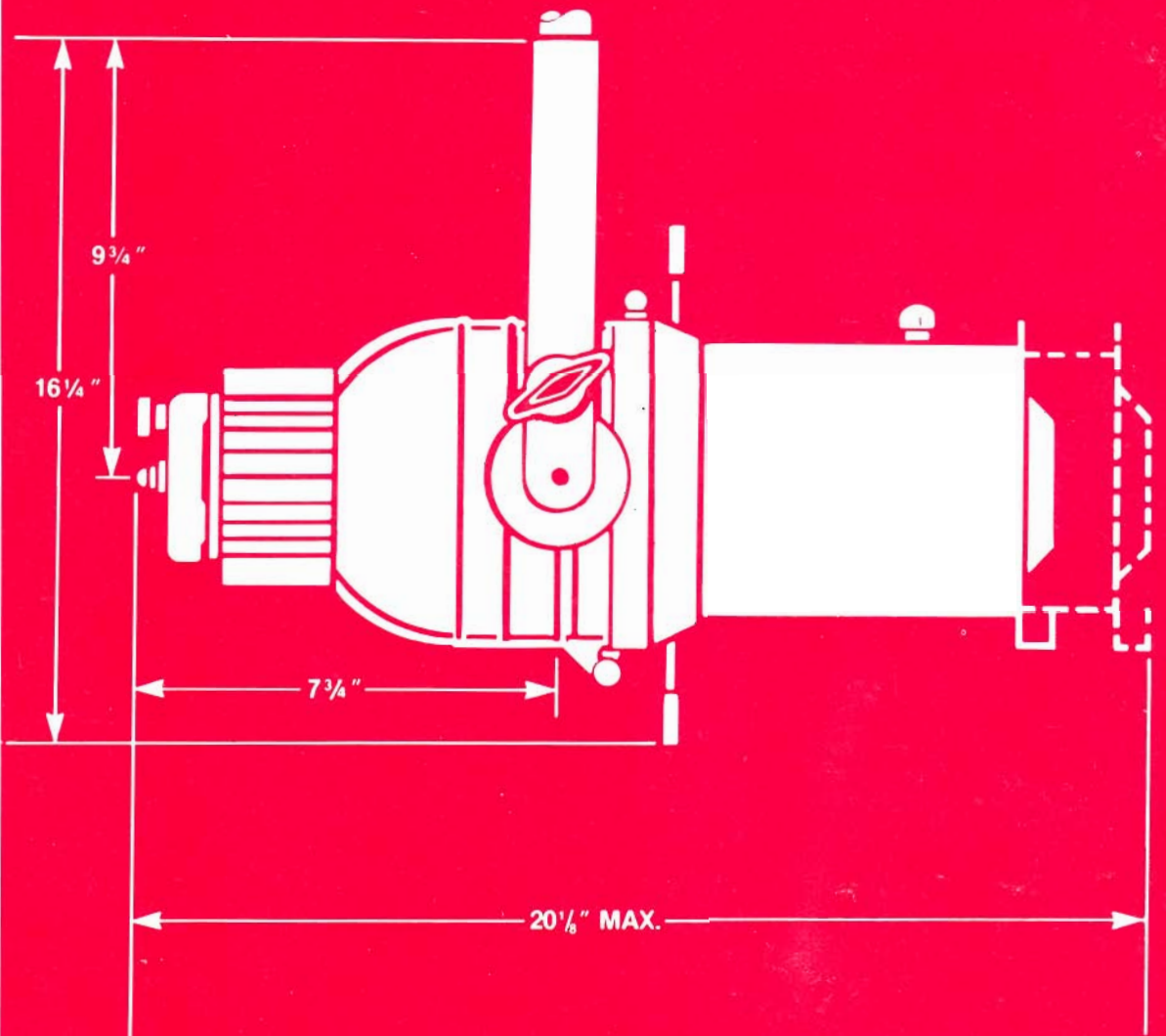


ALTMAN



Ellipsoidals

THE QUALITY OF LIGHT
Altman Stage Lighting Company, Inc., 57 Alexander Street, Yonkers, NY 10701 • 914-476-7987 or 212-569-7777, FAX: 914-963-7304

This catalog supplement has been created to allow the lighting designer to compare and specify luminaires in an easy to understand manner. Altman Stage Lighting Co., Inc. has been designing and manufacturing quality stage lighting equipment for over forty years and we will continue the tradition for many years to come.

- All products listed in this supplement are stock items and are available for immediate shipment.
- Full specifications on all products are available from Altman Stage Lighting or any authorized Altman dealer.
- All luminaires listed in this supplement are UL listed
- All products are made in the USA.



Micro Ellipse



3.5Q Series

MR-16 Micro Ellipse

The MICRO ELLIPSE is a lightweight framing spotlight incorporating a 2.00" optical system designed to produce narrow to medium beam spreads up to 15' away. The luminaire utilizes the popular MR-16 family of dichroic reflector lamps which are ideal for architectural and display applications due to the long lamp life, low cost, and low wattage. Included are four integral framing shutters that provide beam shaping abilities in conjunction with a pattern slot and holder that accepts standard 1.5" patterns to project visual images. The MICRO ELLIPSE is available in an array of anodized colors with optional dichroic color filter assemblies.

Cat No: **Micro Ellipse**

Lamps: MR-16 EYC/EYJ

Accessories - Supplied with luminaire

510M	Baby pipe clamp
MCF	Color frame
MEPH	Pattern holder
MECT	Circle templates

Quartz 3.5" Ellipsoidal

A compact, lightweight ellipsoidal spotlight which produces a high intensity sharp or soft edged beam for throw distances of 20' or more. The 3.5Q is designed for today's long life, high intensity tungsten halogen lamps. Four adjustable integral stainless steel framing shutters provide beam shaping ability and the pattern slot and holder provide the ability to project visual images. While primarily designed for theatrical applications, the 3.5Q is also useful in displays, show windows and night clubs.

Cat No: **3.5Q 5** 48° spread

Cat No: **3.5Q 6** 38° spread

Cat No: **3.5Q 8** 28° spread

Cat No: **3.5Q 10** 23° spread

Cat No: **3.5Q 12** 18° spread

Lamps: EHD/EHC/EHB

Accessories - Supplied with luminaire

510	Malleable iron pipe clamp
3.5Q CF	Color frame

ALTMAN

THE QUALITY OF LIGHT



4.5 Baby Zoom



360Q Series

Baby Zoom 4.5" Ellipsoidal

The 4.5" Zoom focus ellipsoidals are unique luminaires with professional qualities unequaled in other 4.5" spotlights. Each luminaire has an adjustable lampholder allowing peak center performance or a flat field when pattern projection is desired. Four adjustable, cool touch, integral stainless steel framing shutters provide excellent beam shaping ability. Construction is of an extruded aluminum body housing and lightweight die-cast aluminum components internally.

Cat No: **4.5-1530 ZOOM** 15° to 30° spread
 Cat No: **4.5-2550 ZOOM** 25° to 50° spread
 Cat No: **4.5-3060 ZOOM** 30° to 60° spread

Lamps: Minican EHT/EVR
 Med. two-pin EHD/EHC/EHB/EHG/EHF

Accessories - Supplied with luminaire

510 Malleable iron pipe clamp
 4.5 CF Color frame
 4.5 PH Pattern holder

750 watt 6" Ellipsoidal

The 360 and the 360Q are the workhorses of the lighting industry. From the smallest of schools to the largest of the Broadway shows, these fixtures have become the industry standard. The series of fixtures features die-cast and sheet metal construction for many years of trouble free service.

The 360 and 360Q are used in displays, show windows, museums, night clubs or any other area where precision controlled lighting is desirable.

Quartz

Incandescent	Cat No: 360Q 4.5x6.5
Cat No: 360 4.5x6.5	Cat No: 360Q 6x9
Cat No: 360 6x9	Cat No: 360Q 6x12
Cat No: 360 6x12	Cat No: 360Q 6x16
Cat No: 360 6x16	Cat No: 360Q 6x22

Lamps: 360 DNT/DNS/DEB/EBE/EGC/EGF
 360Q EHD/EHF/EHG/EHC/EHB

Accessories - Supplied with luminaire

510 Malleable iron pipe clamp
 360Q CF Color frame



1KL8-1424Z



1KL10-5



1KL6-2040Z

1KL Ellipsoidal Series

The UL listed 1000 watt ellipsoidal series is a full line of fixed focus and zoom focus ellipsoidals. All of the 1KL luminaires have an adjustable lamp holder for peak performance or for flat field pattern projection. Each luminaire has four integral framing shutters which are on separate planes and are offset and reversible to insure maximum shaping flexibility.

With a range of lamps from 500 to 1000 watts, the 1K line is ideal for installation wherever superior controlled lighting with maximum flexibility is desired.

Cat No: 1KL6-12	12° spread	Cat No: 1KL8-10	10° spread
Cat No: 1KL6-20	20° spread	Cat No: 1KL10-5	5° spread
Cat No: 1KL6-30	30° spread	Cat No: 1KL6-2040Z	20° to 40° spread
Cat No: 1KL6-40	40° spread	Cat No: 1KL8-1424Z	14° to 24° spread
Cat No: 1KL6-50	50° spread		

Lamps: EHD/EHB/EHC/EHG/EHF/FEL

Accessories - Supplied with luminaire

- 510 HD Malleable iron pipe clamp
- 1KL CF Color frame (Specify fixture)
- 1KL PH Pattern holder
- 1KL SC Safety chain

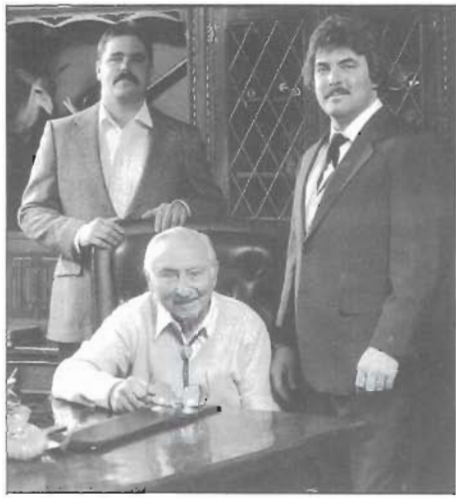


1KL6 Series

ALTMAN

Ellipsoidal Photometric Data

DISTANCE IN FEET		10	20	30	40	50	60	70	80	90	100	FIELD ANGLE	100 F.C. REF. (In feet)	
FIXTURE	LAMP	PEAK FOOTCANDLES (VARIABLE ZOOM FIXTURES SHOWN AS: SPOT/FLOOD)												DISTANCE
		MAXIMUM DIAMETER IN FEET (VARIABLE ZOOM FIXTURES SHOWN AS: SPOT/FLOOD)										FIELD DIA.		
Micro Ellipse	EYC	94/31	18/12											
		3/4	7/10											
3.5Q 5	EHD	120	30	13	7	5						48°	10.9	
		8	17	25	35	44							8.8	
3.5Q 6	EHD	150	38	17	9	6						38°	12.2	
		7	14	21	27	34							6.3	
3.5Q 8	EHD	160	40	18	10	6.5						28°	13.1	
		5	10	15	20	25							5.2	
3.5Q 10	EHD	175	43	19	11	7						23°	14.1	
		4	8	12	16	20							5.2	
3.5Q 12	EHD	200	50	22	13	8						18°	14.1	
		3	6	10	13	16							4.2	
4.5-1530Z	EHF		220/138	98/61	53/34	35/22	24/15					15°-30°	30/23.4	
			5/11	8/16	11/21	13/27	16/22							8/12.6
4.5-2550Z	EHF		200/100	89/44	50/25	32/16	22/11					25°-50°	28/20	
			9/19	13/28	18/37	22/47	27/56							12/18.7
4.5-3060Z	EHF		125/66	56/29	31/16	20/11	14/7					30°-60°	22/16	
			11/23	16/35	21/46	27/58	32/70							12/18.4
360 4.5x6.5	DNS	152	31	17	10							56°	12.5	
		11	21	32	42								13.5	
360 6x9	DNS	375	91	40	23							35°	18.9	
		6	13	19	25								11.3	
360 6x12	DNS	448	110	50	28							25°	21.3	
		5	9	13	18								9.6	
360 6x16	DNS	625	156	170	40							21°	25	
		4	7	11	15								8.9	
360Q 4.5x6.5	EHF			56	32	20	14	10				55°	22.5	
				31	41	52	62	72						23.5
360Q 6x9	EHF			97	55	35	24	18				37°	30	
				20	27	33	40	47						20
360Q 6x12	EHF			170	95	61	42	31				26°	39	
				14	19	23	28	32						18.5
360Q 6x16	EHF			205	115	75	52	38				19°	43	
				10	14	17	20	24						15
360Q 6x22	EHF			240	135	87	60	43				11°	47	
				6	8	9	11	13						9.4
1KL6-12	FEL			381	214	137	95	70				12°	58	
				6	8	10	13	15						12.2
1KL6-20	FEL			287	161	103	72	53				20°	50	
				11	14	18	21	25						17.6
1KL6-30	FEL			217	122	78	54	40				30°	44	
				16	21	27	32	38						23.5
1KL6-40	FEL			164	93	59	41	30				40°	38	
				22	29	36	44	51						27.6
1KL6-50	FEL			109	61	39	27	20				50°	31	
				28	37	47	56	65						28.8
1KL6-2040Z	FEL			306/94	172/53	110/34	76/24	56/17				20°-40°	52/29	
				11/22	14/29	8/36	21/44	25/51						18.3/21
1KL8-1424Z	FEL			544/291	306/164	196/105	136/73	100/53				14°-24°	70/51	
				7/13	10/17	12/21	15/26	17/30						17/21.6
1KL8-10	FEL					196	136	100	76	60		10°	70	
						11	13	15	17	19			14.7	
1KL10-5	FEL								125	99	80	5°	79	
									10	11	12		10.6	



Three generations of continuous pursuit of excellence.

What's in a name? Everything when its **ALTMAN**

Altman is a tradition. A family business when it started, and a family business today. Charles Altman, the patriarch, and a driving force. Robert Altman, a son, boldly leading the company into tomorrow. Randall Altman, a grandson, stride by stride with Robert striving for family pride in excellence. Ronald Altman, whose memory, still inspiring loyalty, will always live on. All give the Altman name stature and importance in the world of theatrical lighting.

Altman is dedication. **Dedication** to building it right, to building it in the **U.S.A.** Shortcuts don't exist. Only **pride** which shines as brightly as an Altman light itself. **Pride** evidenced by **hands-on management** And **pride** in **lights** as old as the company. . . still in service, still trouble-free.

Altman is design innovation. And technological breakthrough. It's R&D. With lighting designers schooled in optics and engineering. It's a state of the art CAD/CAM pilot production installation. So ideas can move from paper to production almost overnight.

Altman is experience. From Broadway to summer stock, the **World's Fair to Woodstock**, the Statue of Liberty celebration to Presidential Inaugurations, Altman is behind the scenes with innovative new pro-

ducts - a major lighting presence and the standard by which others are judged.

But first, last, and always, Altman is customer satisfaction. As the company moves steadily forward into the '90s, procedures and techniques will be incorporated to improve customer service. Customer hotlines. Faster service. Greater attention to requests for information. Computer tracking. Some have already been implemented, and more will follow. One thing is sure. Altman built its business on personal service. And this will never change.

Tradition. Dedication. Design innovation. Experience. Service. Altman is all of these. Because **Altman is the quality of light.**

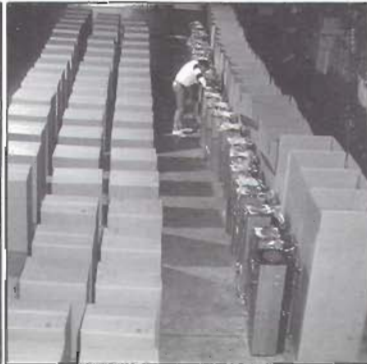
Altman operates out of a modern 100,000 sq. foot facility located on the banks of the Hudson River only 8 miles north of Manhattan.



Electro-static spraying produces smooth even quality.



Efficient production, producing high quality...high volume output.



Inspected and packed with care for damage free shipment.



Well stocked hi-tech rental department.



From design to production Altman's state-of-the-art equipment assures you of the finest products.



An authorized Altman dealer:

Printed in U.S.A.

11/91 — 5M